

MARINE TRANSMISSION

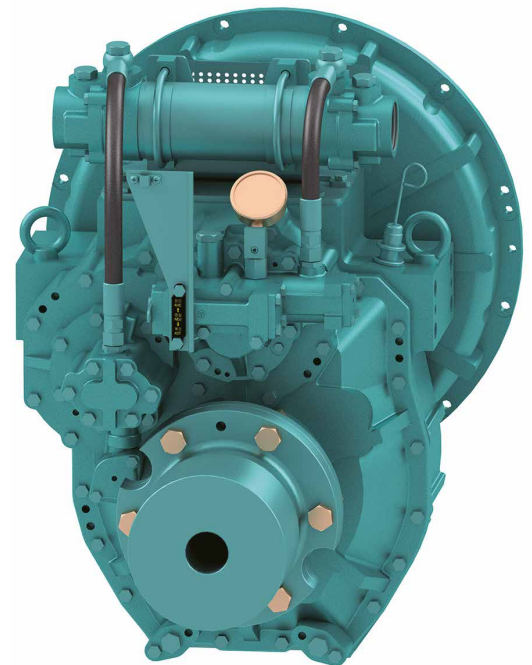
DMT190H

■ Standard Scope Of Supply

- Bell Housing (SAE 1, 2)
- Centa Flexible Coupling (14")
- Dual Stage Coupling(11.5")
- Propeller Coupling, Reamer Bolt
- Manual Control Valve
- Oil Cooler
- Cable Bracket

■ Options

- Manual Trolling Valve
- D-trolling Valve
- Electronic Control Valve(12V,24V)
- Manual Trolling Valve + Electronic Control Valve(12V,24V)
- Centa Flexible Coupling (14")
- Mounting Bracket (Flat type, L type)



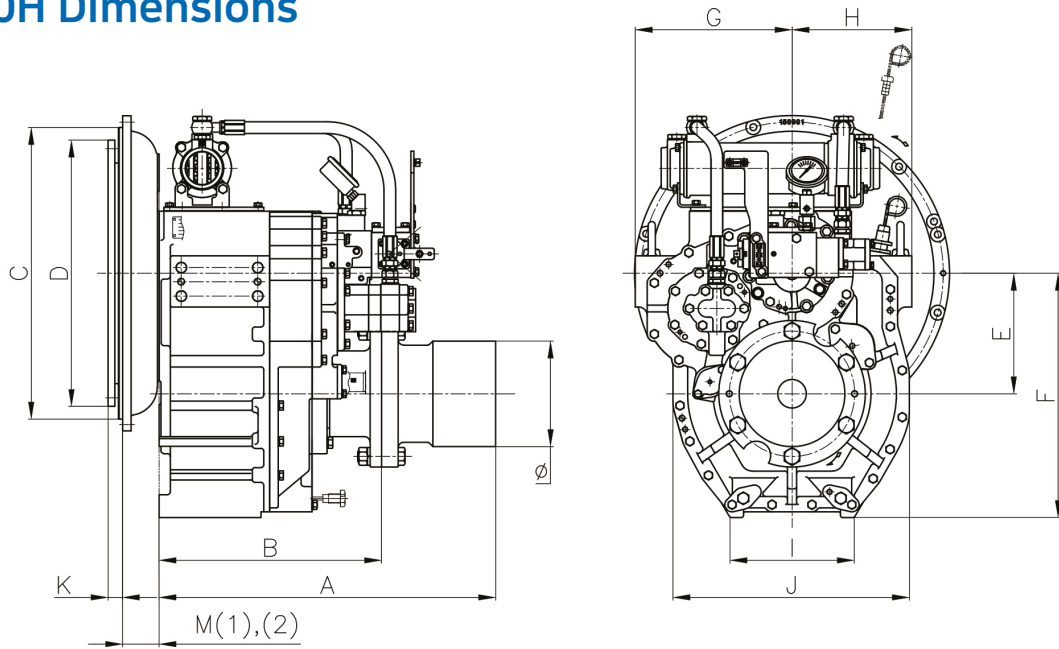
| Model | Ratio | Max Input Torque | | Capacity/RPM | | Capacity/1800RPM | | Max Input (RPM) | Bell Housing (SAE) | DRY WEIGHT (kg) |
|---------|-------------------------------|------------------|-------|--------------|-------|------------------|-----|-----------------|--------------------|-----------------|
| | | (kgf.m) | (N.m) | kW | HP | kW | HP | | | |
| DMT190H | 1.83*, 2.09, 2.51, 3.08, 3.43 | 180 | 1765 | 0.184 | 0.247 | 332 | 446 | 2500 | 1, 2 | 278 |

*Special Order Ratio

※ The dry weight is the weight that excludes bell housing, coupling (rubber block, dual stage, Centa flexible) and propeller coupling from the standard scope of supply.

※ The capacity for classification may differ from the capacity on the table, please contact our sales team.

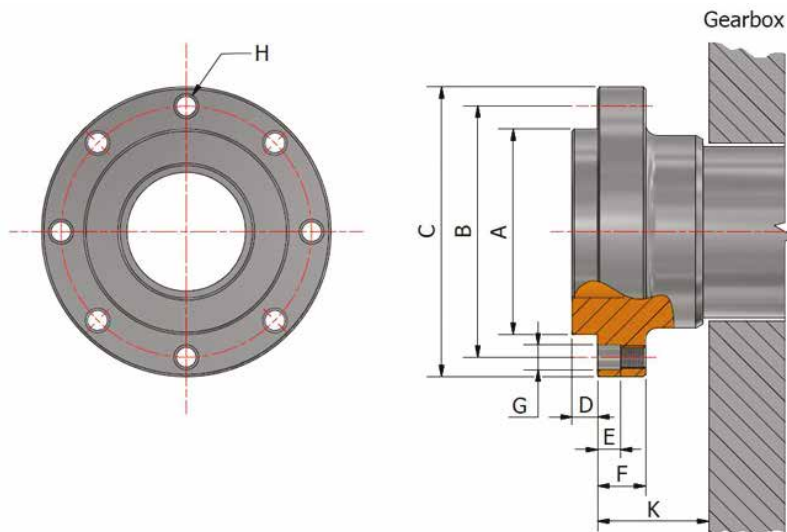
DMT190H Dimensions



| A | B | E | F | G | H | I | J | Ø |
|-----|-----|-----|-----|-----|-----|-----|-----|-----|
| 518 | 378 | 211 | 428 | 275 | 210 | 218 | 415 | 150 |

| Bell Housing Standard | Driving Ring | C | D | M(1) | M(2) | K |
|-----------------------|--------------|-----|-----|------|------|----|
| SAE#1 | 14" | 511 | 466 | 64 | 88 | 25 |
| SAE#2 | 11.5" | 447 | 325 | - | - | 39 |

※ M(1) : Standard Coupling Dimension, M(2) : High Flexible Coupling Dimension



| A | B | C | D | E | F | G | H | K |
|-----|------------------------------------------|------|------|------|----|----|-------------|------|
| Ø90 | $\begin{matrix} 0 \\ -0.02 \end{matrix}$ | Ø110 | Ø127 | 11.5 | 10 | 21 | 8-M10 P1.25 | 37.5 |