

# MARINE TRANSMISSION

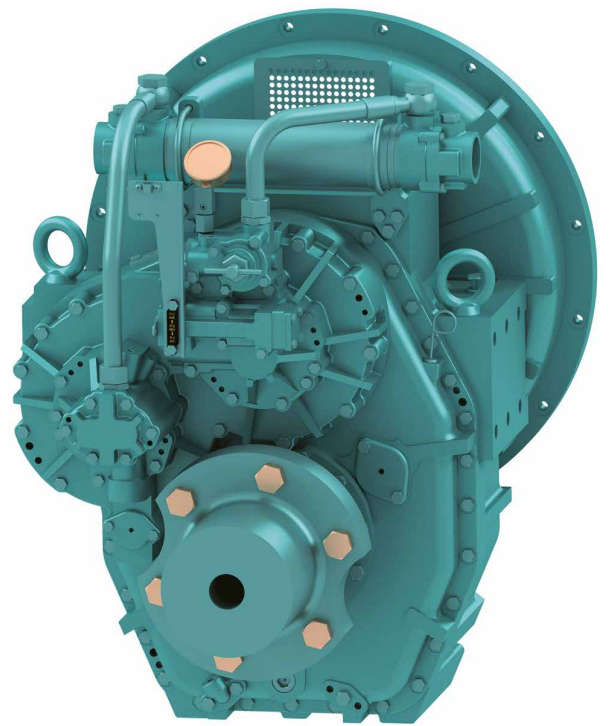
## DMT430H

### ■ Standard Scope Of Supply

- Bell Housing (SAE 0, 1)
- Centa Flexible Coupling (18", 14")
- Propeller Coupling, Reamer Bolt
- Manual Control Valve
- Oil Cooler
- Cable Bracket

### ■ Options

- Manual Trolling Valve
- Electronic Control Valve(12V,24V)
- Manual Trolling Valve + Electronic Control Valve(12V,24V)
- Mounting Bracket (Flat type, L type)

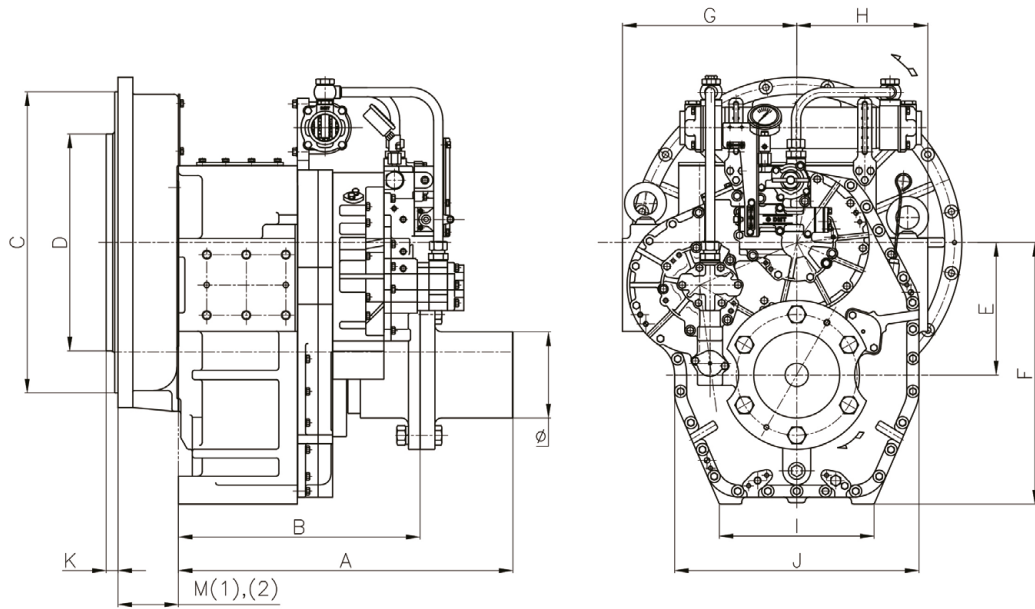


| Model   | Ratio            | Max Input Torque |       | Capacity/RPM |       | Capacity/1800RPM |      | Max Input (RPM) | Bell Housing (SAE) | DRY WEIGHT (kg) |
|---------|------------------|------------------|-------|--------------|-------|------------------|------|-----------------|--------------------|-----------------|
|         |                  | (kgf.m)          | (N.m) | kW           | HP    | kW               | HP   |                 |                    |                 |
| DMT430H | 2.05, 2.43, 2.93 | 453              | 4443  | 0.464        | 0.623 | 836              | 1122 | 2300            | 0, 1               | 664             |
|         | 3.23             | 430              | 4218  | 0.440        | 0.591 | 794              | 1065 | 2300            |                    |                 |
|         | 3.40             | 408              | 4002  | 0.418        | 0.562 | 754              | 1011 | 2300            |                    |                 |

※ The dry weight is the weight that excludes bell housing, coupling (rubber block, dual stage, Centa flexible) and propeller coupling from the standard scope of supply.

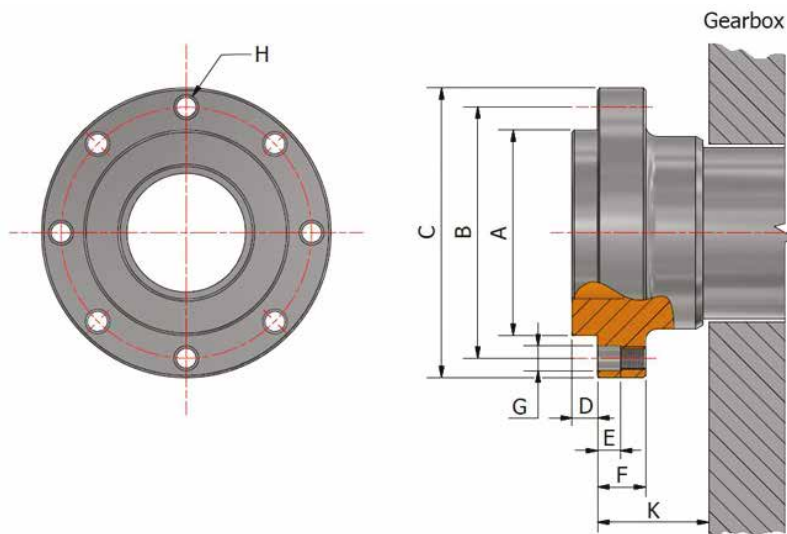
※ The capacity for classification may differ from the capacity on the table, please contact our sales team.

## DMT430H Dimensions



| A   | B   | E   | F   | G   | H   | I   | J   | Ø   |
|-----|-----|-----|-----|-----|-----|-----|-----|-----|
| 720 | 520 | 285 | 494 | 375 | 281 | 333 | 525 | 185 |

| Bell Housing Standard | Driving Ring | C   | D   | M(1) | M(2) | K  |
|-----------------------|--------------|-----|-----|------|------|----|
| SAE#0                 | 18"          | 647 | 571 | -    | 130  | 15 |
| SAE#1                 | 14"          | 511 | 466 | -    | 122  | 25 |



| A    | B  | C    | D    | E | F  | G  | H   | K          |      |
|------|--|------|------|---|----|----|-----|------------|------|
| Ø129 | $\begin{matrix} 0 \\ -0.02 \end{matrix}$ | Ø155 | Ø177 | 7 | 11 | 25 | Ø16 | 8-M14 P1.5 | 35.7 |