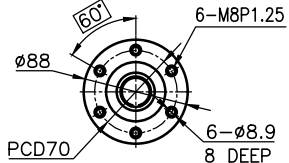
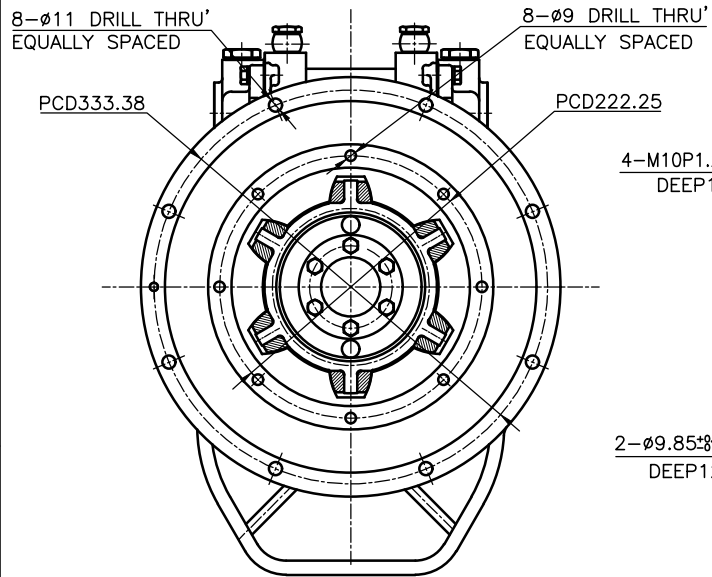


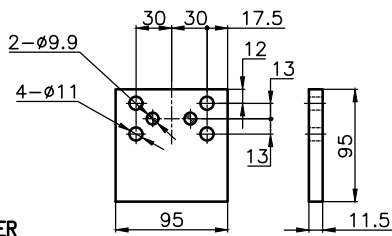
OUTPUT SHAFT COUPLING & PROPELLER COUPLING DIMENSION



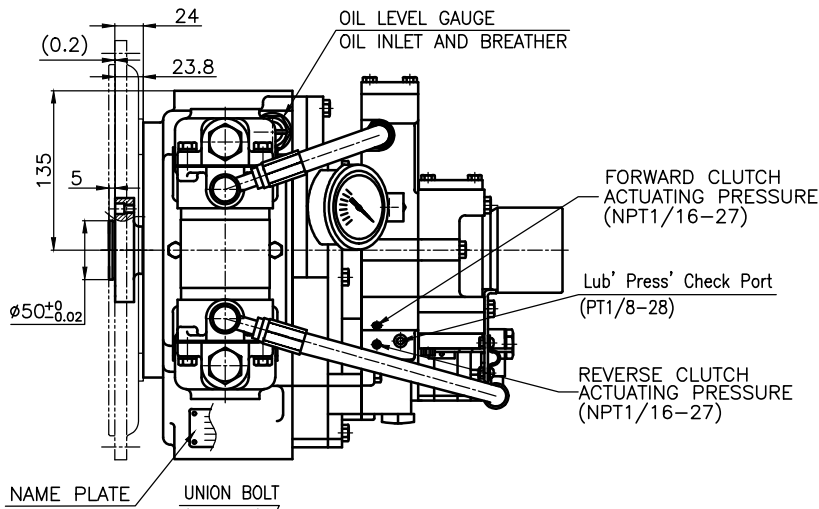
INPUT COUPLING DIMENSION



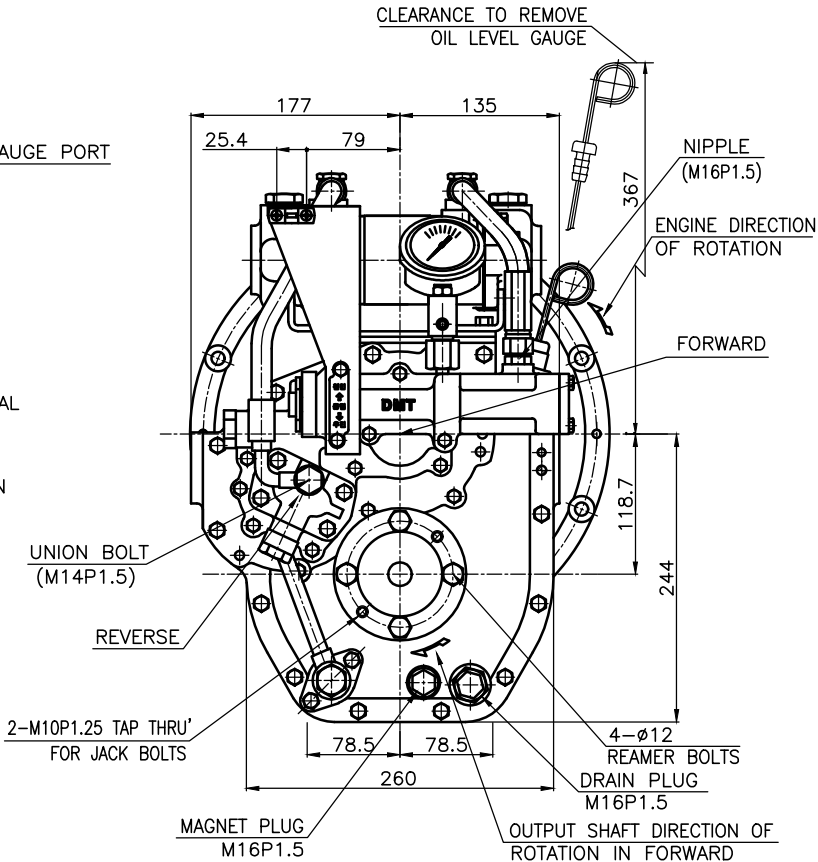
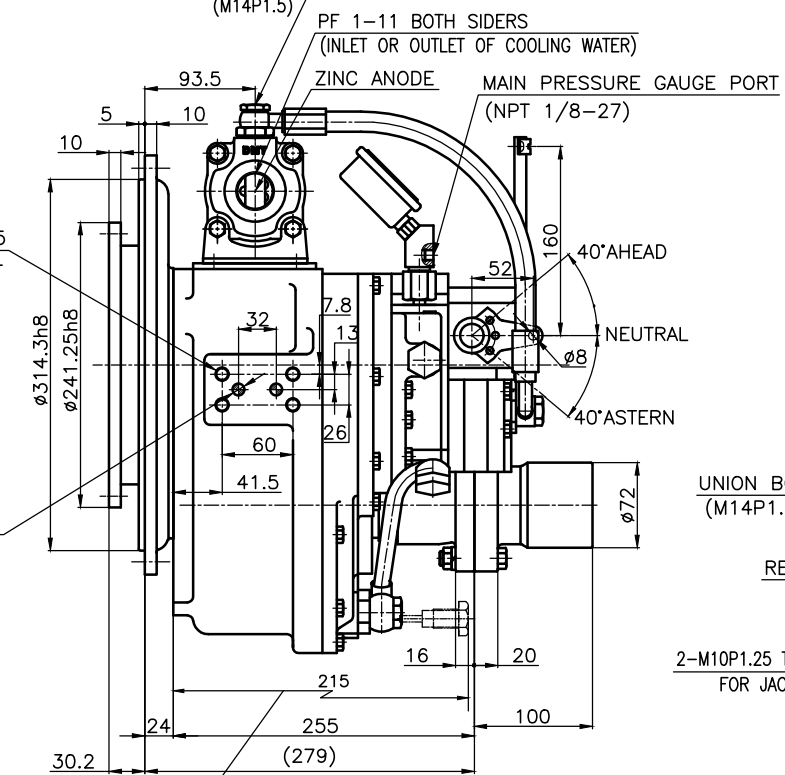
- REMARK**
- 1.HOUSING: SAE#5
 - 2.DRIVING RING: SAE 7.5"
 - 3.COUPLING TYPE : RUBBER



BRACKET DIMENSION



DMT 25AL MARINE TRANSMISSION SPECIFICATION		
GEAR RATIO	1.64, 2.07, 2.52, 2.96, 3.32	
TOTAL WEIGHT	APPROX. 77 Kg(DRY)	
OIL CAPACITY	APPROX. 2L	
OIL VISCOSITY	SAE # 30	
OIL PRESSURE	1.96 ~ 2.35 MPa	CLUTCH OIL
DIRECTION OF ROTATION IN FORWARD	INPUT C.C.W VIEWED FROM THE STERN	OUTPUT C.W VIEWED FROM THE STERN
OIL CHANGE INTERVAL	THE FIRST 100HOURS OF INITIAL OPERATION AND EVERY 1000HOURS THEREAFTER	
SHIFTING LIMIT	UNDER 50% OF THE RATED ENGINE SPEED	
OIL COOLER	WATER FLOW 20 ~ 40 L/m	TEMPERATURE OF COOLING WATER MAX 32°C
OPERATING TORQUE OF SHIFTING LEVER	UNDER 2.94Nm	



공용공차 TOLERANCE ON		번호 NO.	부 PART NO.	명 PART NAME	개수 QTY	재 MATERIAL	구 SIZE	비 REMARK
분수 FRACTIONS	소수 DECIMALS	작성 DATE 2018.09.12		척도 SCALE N/S	TYPE DMT25AL		비 ORIGINAL DWG. NO.	
각도 ANGLES		검사 기공		인 인	NAME MARINE TRANSMISSION		개 (REV) 000	
±	±	승 인 APPROVED BY JK.Kim	검 토 CHECKED BY TH.Cha	제 도 DRAWN GH.Park	도 DWG. NO. 025000LA-E-575RC		크 기 SIZE A 3	
±0.05	±0.1	D-I INDUSTRIAL		코 드 CODE ID. NO.				
±0.07	±0.2							
±0.1	±0.3							
±0.2	±0.5							
±0.3	±1.2							
±0.5	±2.0							