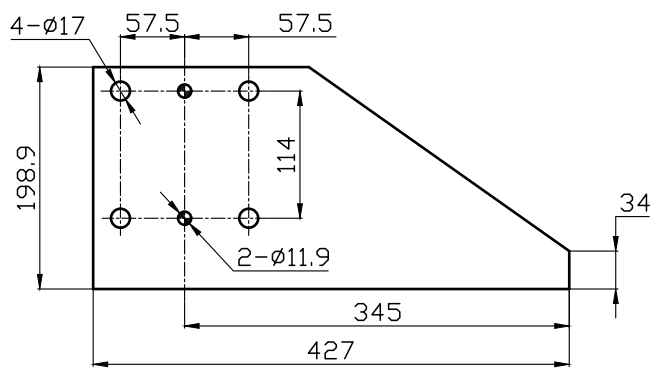
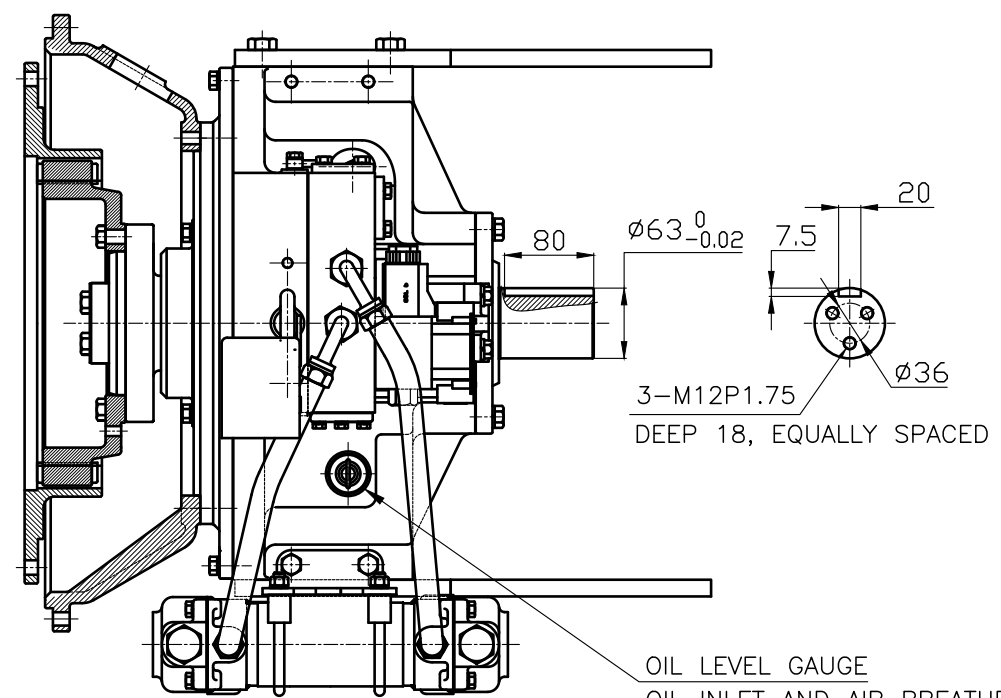


REV. NO.	DATE	REV'D	APP'D

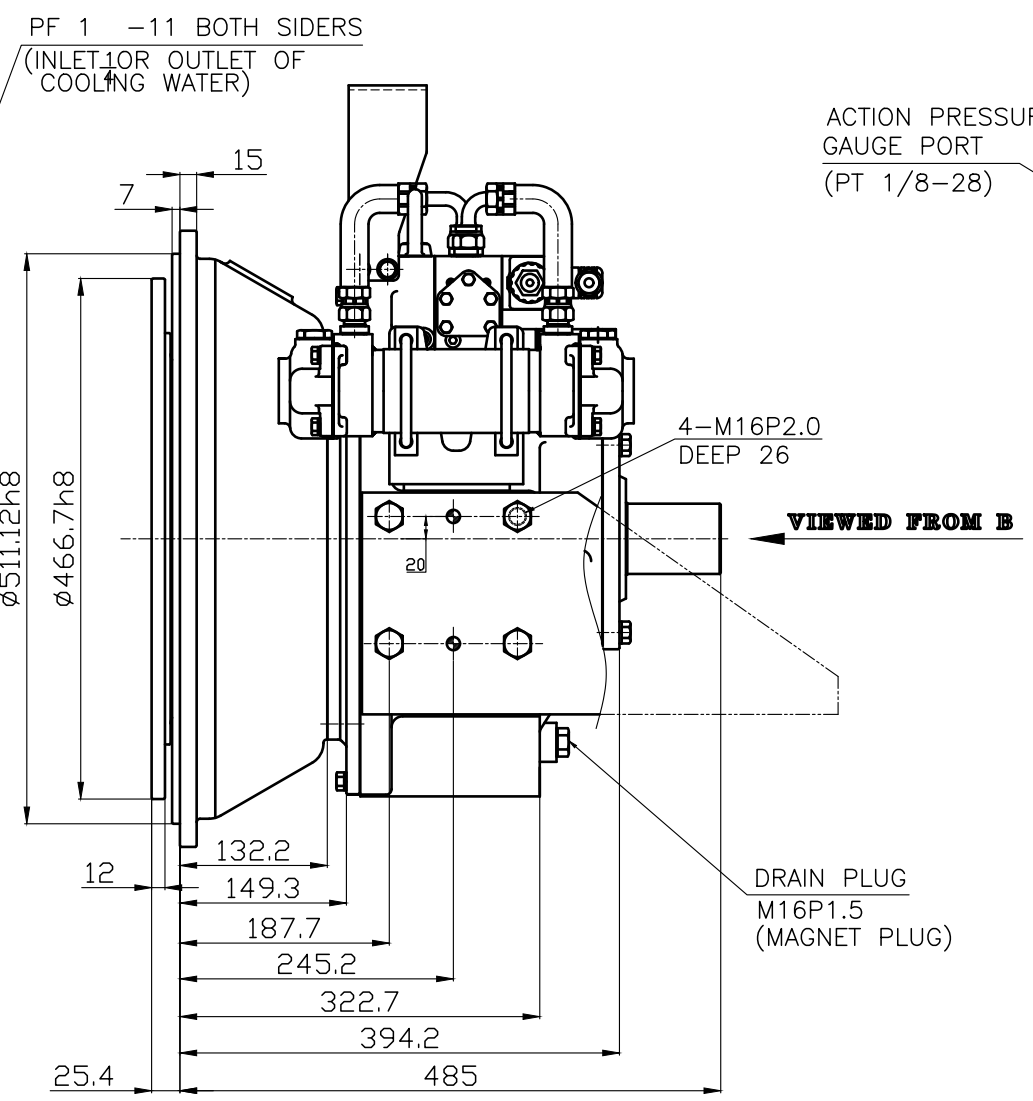
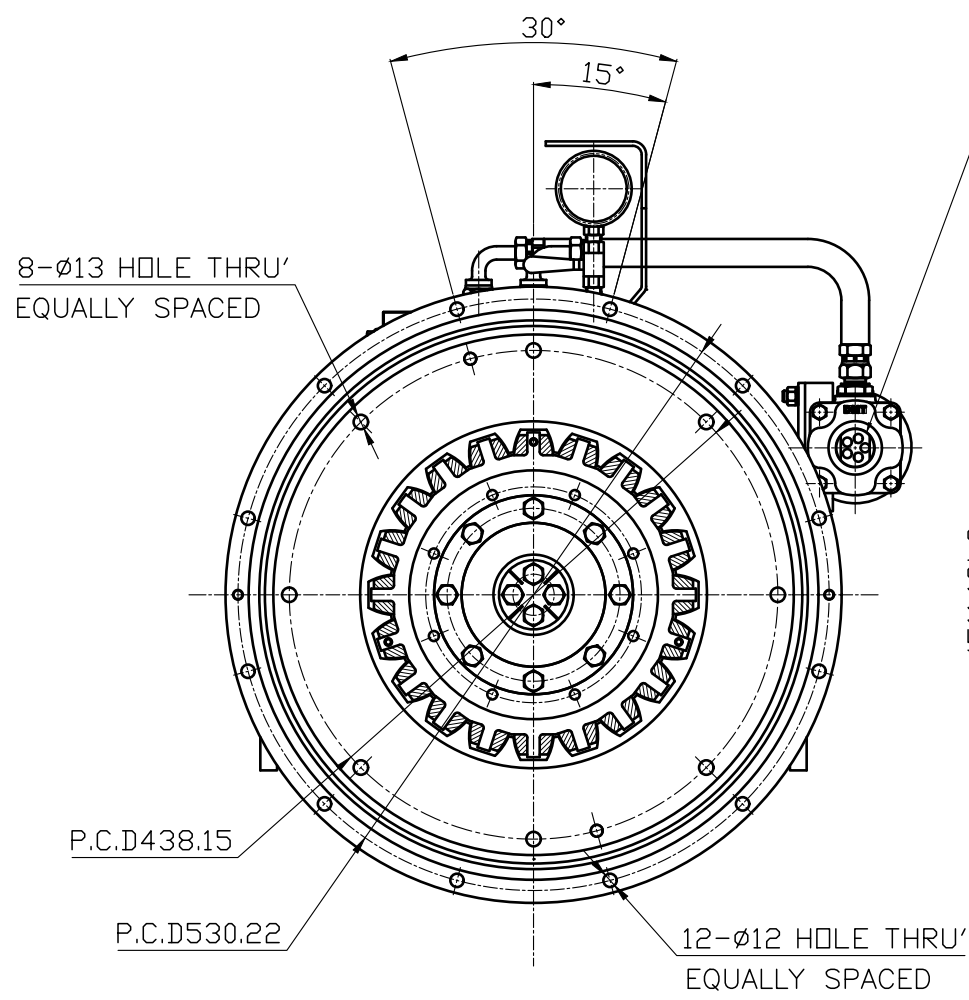
GEAR RATIO	ONLY 1 : 1		
TOTAL WEIGHT	APPROX. 125 kg(DRY)		
OIL CAPACITY	APPROX. 4 L		
OIL VISCOSITY	SAE # 30		
OIL PRESSURE	1.56 ~ 2.35 MPa	CLUTCH OIL	
DIRECTION OF ROTATION	INPUT	THE SAME DIRECTION AS ENGINE ROTATION	
	OUTPUT	THE SAME DIRECTION AS ENGINE ROTATION	
OIL CHANGE INTERVAL	THE FIRST 100HOURS OF INITIAL OPERATION AND EVERY 1000HOURS THEREAFTER		
SHIFTING LIMIT	UNDER 50% OF THE RATED ENGINE SPEED		
OIL COOLER	WATER FLOW 40 ~ 60L/min		
	TEMPERATURE OF COOLING WATER	MAX 32°C	



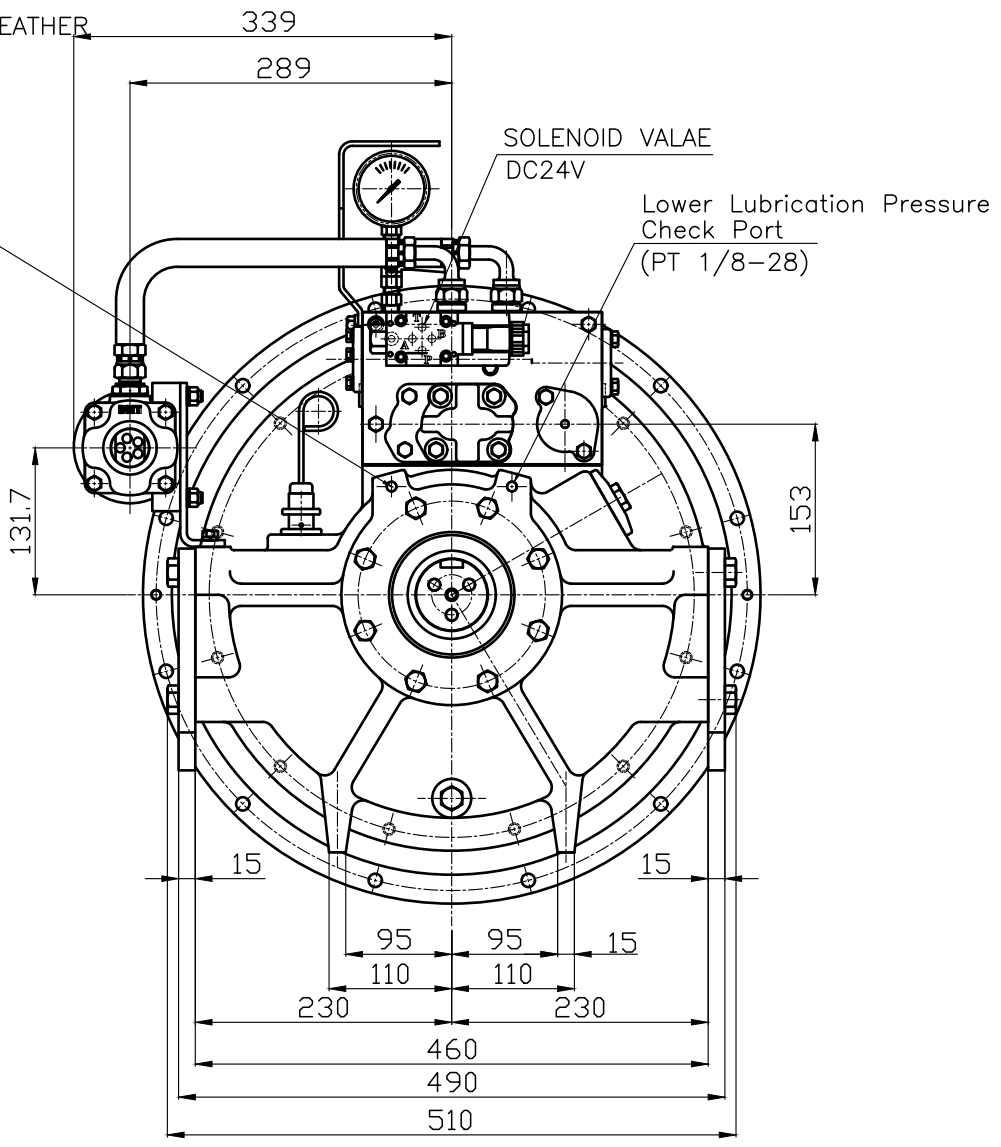
BRACKET DIMENSION



OIL LEVEL GAUGE  
OIL INLET AND AIR BREATHER



VIEWED FROM B



REMARK

- HOUSING: SAE#1
- DRIVING RING: SAE 14"
- OUTPUT SHAFT SPEC: SHAFT ø63\_ KEY 20mm\*80mm

MODEL	INPUT (ENGINE)	OUTPUT (PTO)
DPO-F160S	(RIGHT)	(RIGHT)
DPO-R160S	(LEFT)	(LEFT)

공용규격	TOLERANCE ON	번호	PART NO.	부 명	수량	재료	규격	비고
FRACTIONS	소수	각도	제 1 참조					
±	±	±	SCALE 1/1					
±	±	±	DATE 2013.02.05					
±	±	±	APPROVED BY					
±	±	±	CHECKED BY					
±	±	±	DESIGNED					
±	±	±	NAME					
±	±	±	DWG. NO. T 1 6 0 F(R)SH1G					
±	±	±	SIZE A0					
±	±	±	CODE ID. NO.					

D-I INDUSTRIAL