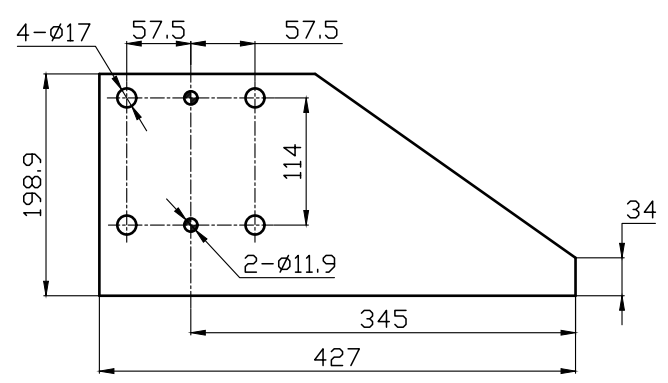
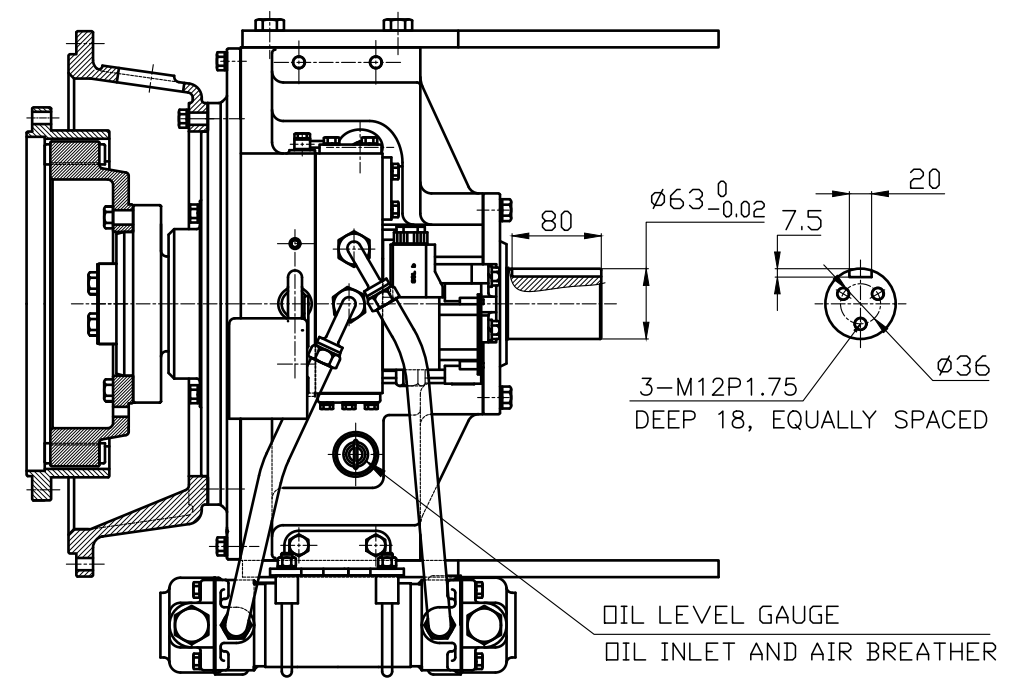


SYMBOL	DESCRIPTION	POSITION	REVISION NO.	DATE	REV'D	APP'D

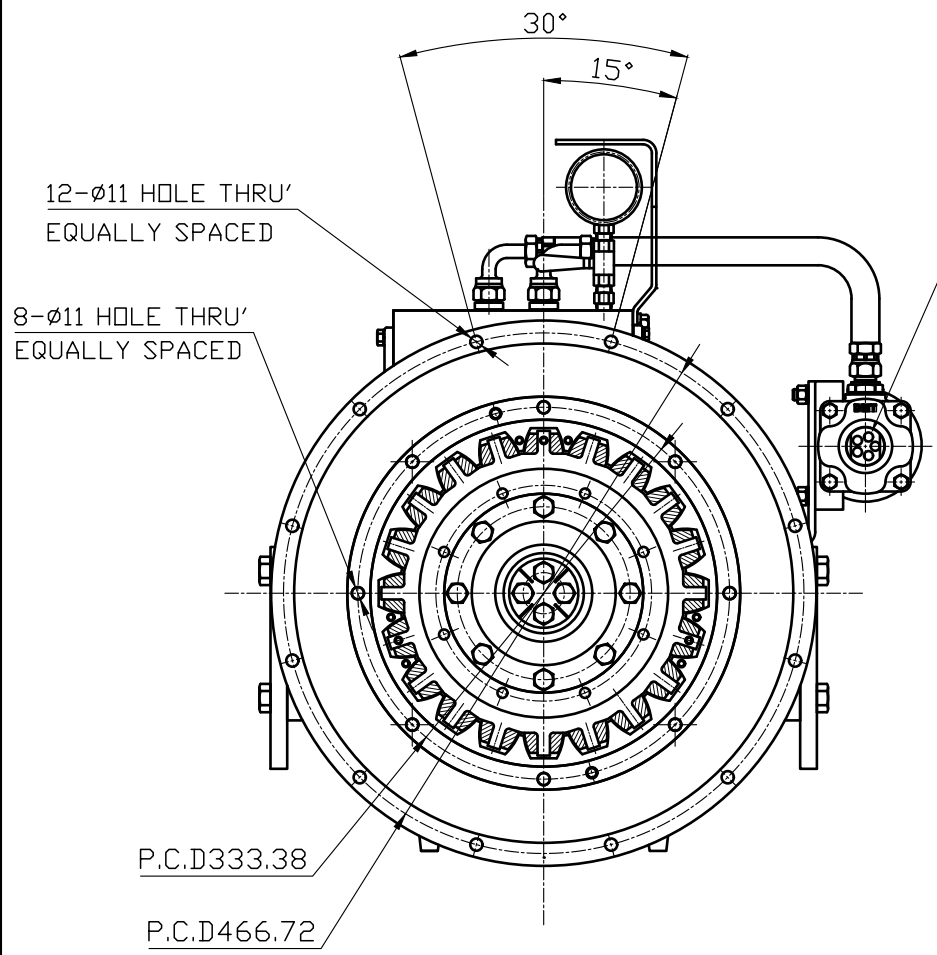
DPO 160 HYDRAULIC POWER TAKE OFF SPECIFICATION		
GEAR RATIO	ONLY 1 : 1	
TOTAL WEIGHT	APPROX. 125 kg(DRY)	
OIL CAPACITY	APPROX. 4 L	
OIL VISCOSITY	SAE # 30	
OIL PRESSURE	1.56 ~ 2.35 MPa	CLUTCH OIL
DIRECTION OF ROTATION	INPUT	THE SAME DIRECTION AS ENGINE ROTATION
	OUTPUT	THE SAME DIRECTION AS ENGINE ROTATION
OIL CHANGE INTERVAL	THE FIRST 100HOURS OF INITIAL OPERATION AND EVERY 1000HOURS THEREAFTER	
SHIFTING LIMIT	UNDER 50% OF THE RATED ENGINE SPEED	
OIL COOLER	WATER FLOW 40 ~ 60L/min	TEMPERATURE OF COOLING WATER MAX 32°C



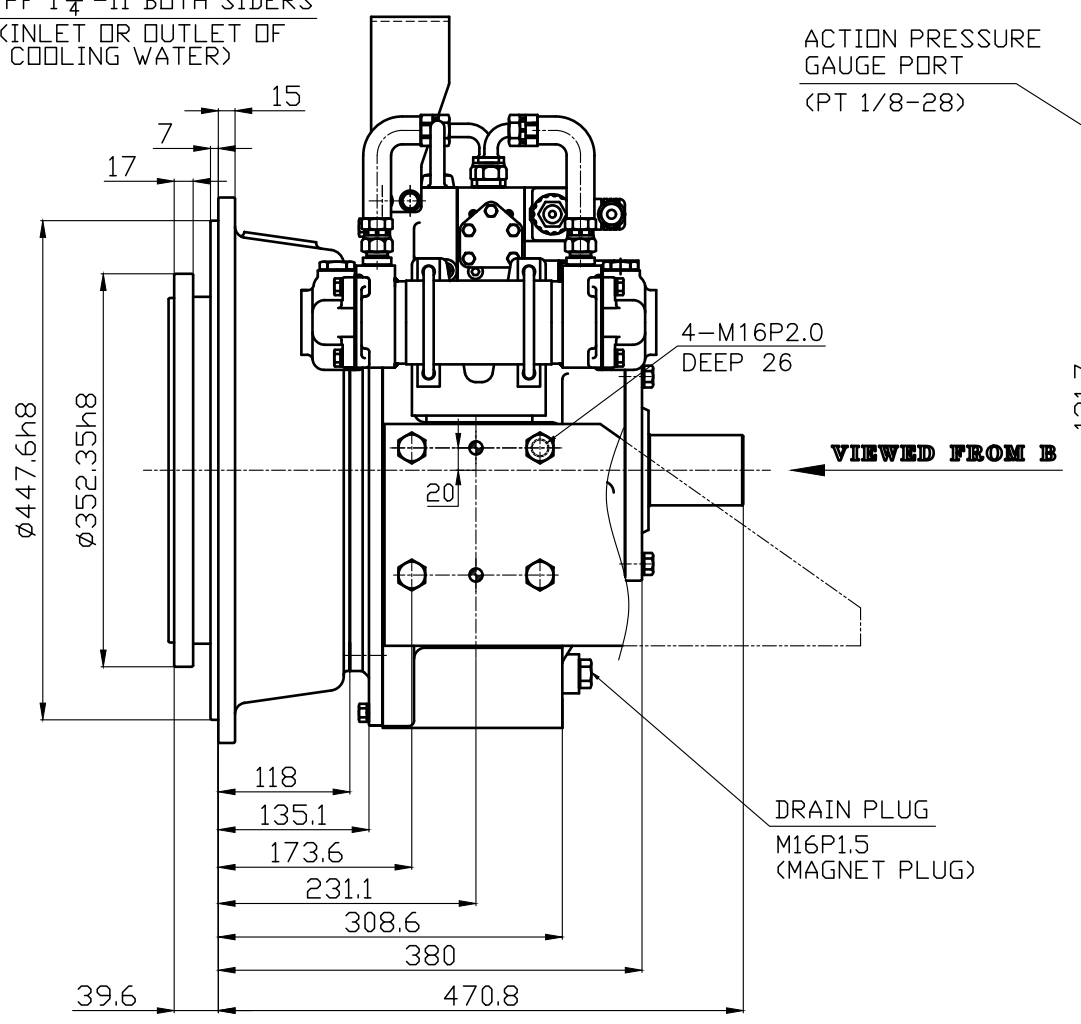
BRACKET DIMENSION



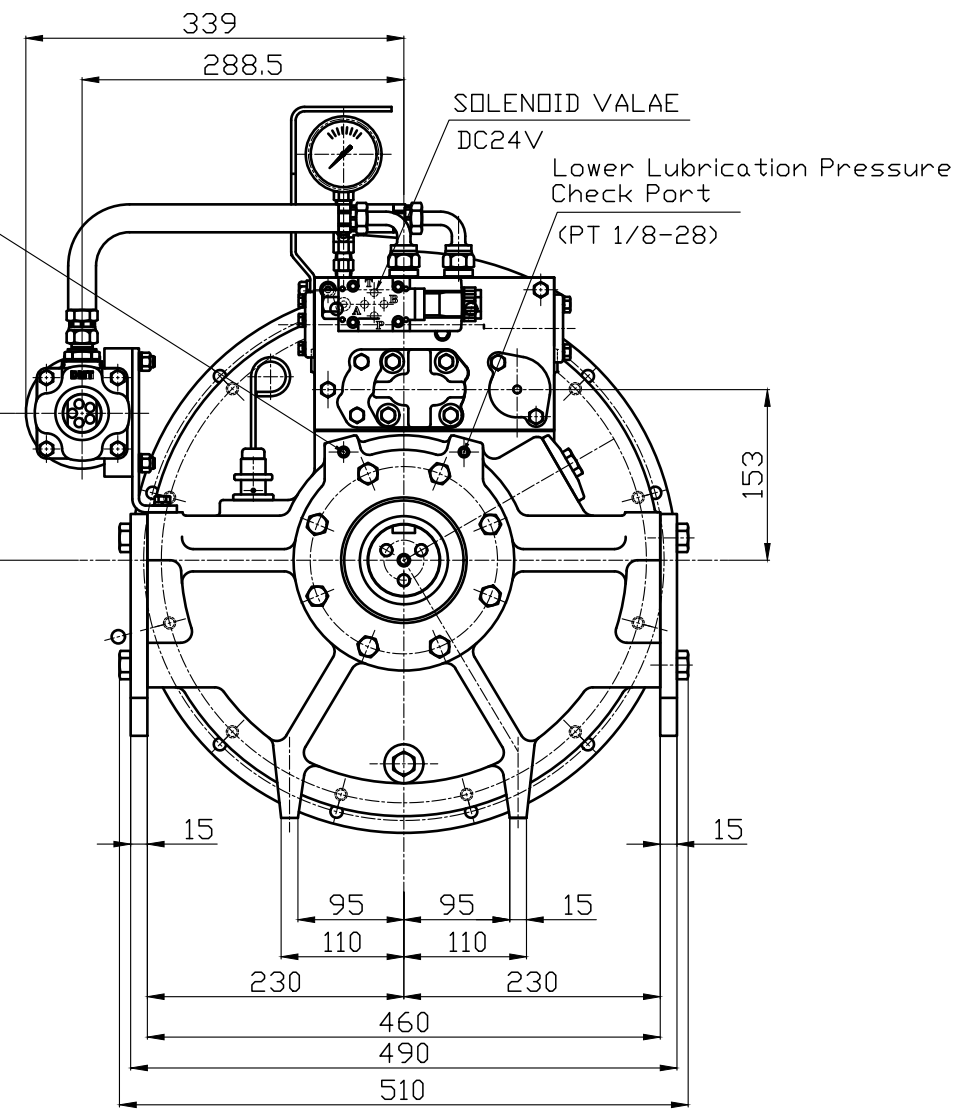
OIL LEVEL GAUGE
OIL INLET AND AIR BREATHER



PF 1 1/4 -11 BOTH SIDERS
(INLET OR OUTLET OF COOLING WATER)



VIEWED FROM B



REMARK

- HOUSING: SAE#2
- DRIVING RING: SAE 11.5"
- OUTPUT SHAFT SPEC: SHAFT ø63_ KEY 20mm*80mm

ROTATION DIRECTION BY MODEL (VIEWED FROM B)		
MODEL	INPUT (ENGINE)	OUTPUT (PTO)
DPO-F160S	(RIGHT)	(RIGHT)
DPO-R160S	(LEFT)	(LEFT)

공통규격	TOLERANCE ON	번호	PART NO.	명칭	수량	재료	비고	REMARKS
FRACTIONS	DECIMALS	각도	SCALE	DATE	SCALE	TYPE	SIZE	ORIGINAL DWG. NO.
±	±	±	1/1	2013.02.05	1/1	DPO-F(R)160S	A0	
1호과 4 이하		±0.3	±0.1	±0.05	MATERIAL: 주기 1 참조 APPROVED BY: [Signature] CHECKED BY: [Signature] DESIGNED: [Signature] DRAWN: [Signature]			
4 16		±0.6	±0.2	±0.07	NAME: PTO INSTALLATION DRAWING DWG. NO.: T 1 6 0 F(R)SH2G			
16 63		±0.7	±0.3	±0.1	CODE: 경철 SIZE: A0			
63 250		±1.2	±0.5	±0.2	CODE: T 1 6 0 F(R)SH2G			
250 1000		+2.0	+0.8	+0.3	CODE: A0			

D-I INDUSTRIAL