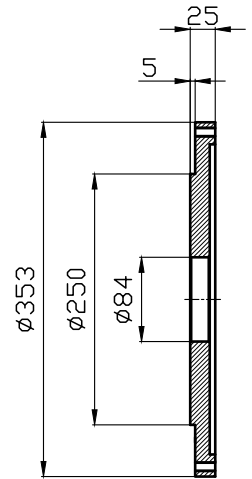
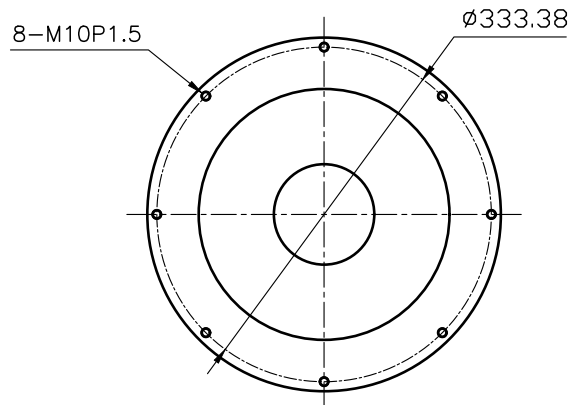
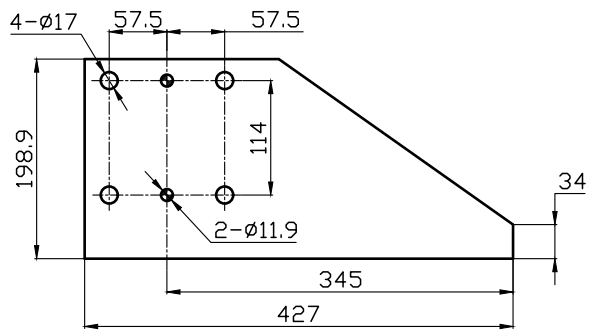


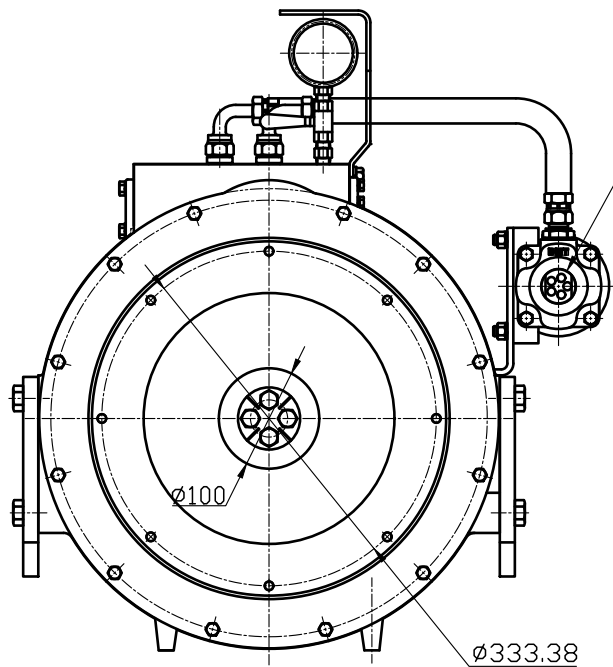
SYM.	DESCRIPTION	POSITION	REVISION NO.	DATE	REV'D	APP'D



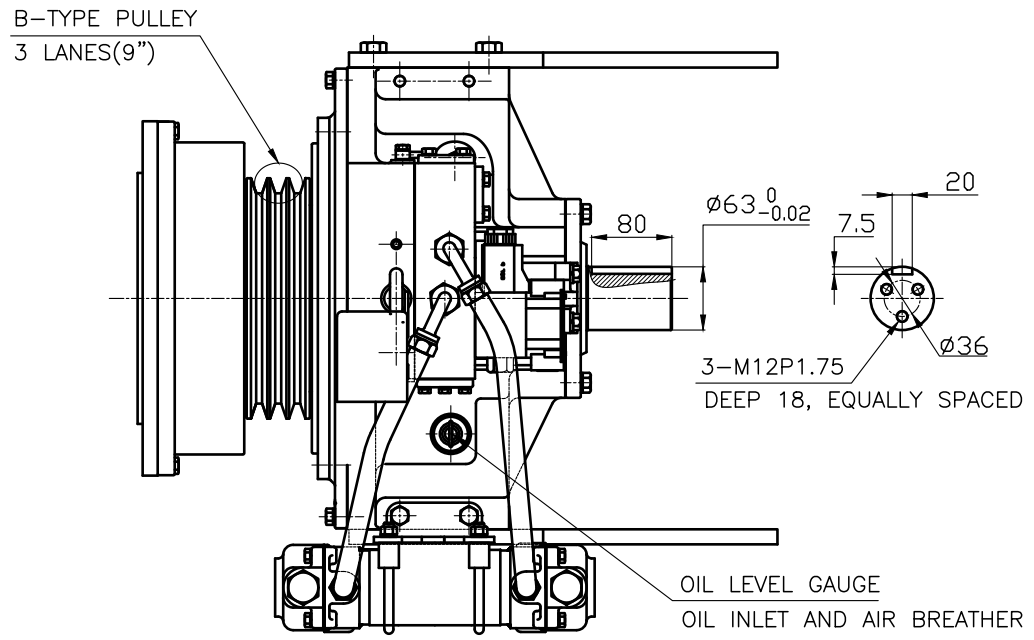
STANDARD : DUMMY PLATE  
[MANUFACTURE THIS PLATE FOR ENGINE PULLEY]



BRACKET DIMENSION



PF 1 1/4 -11 BOTH SIDERS  
(INLET OR OUTLET OF COOLING WATER)

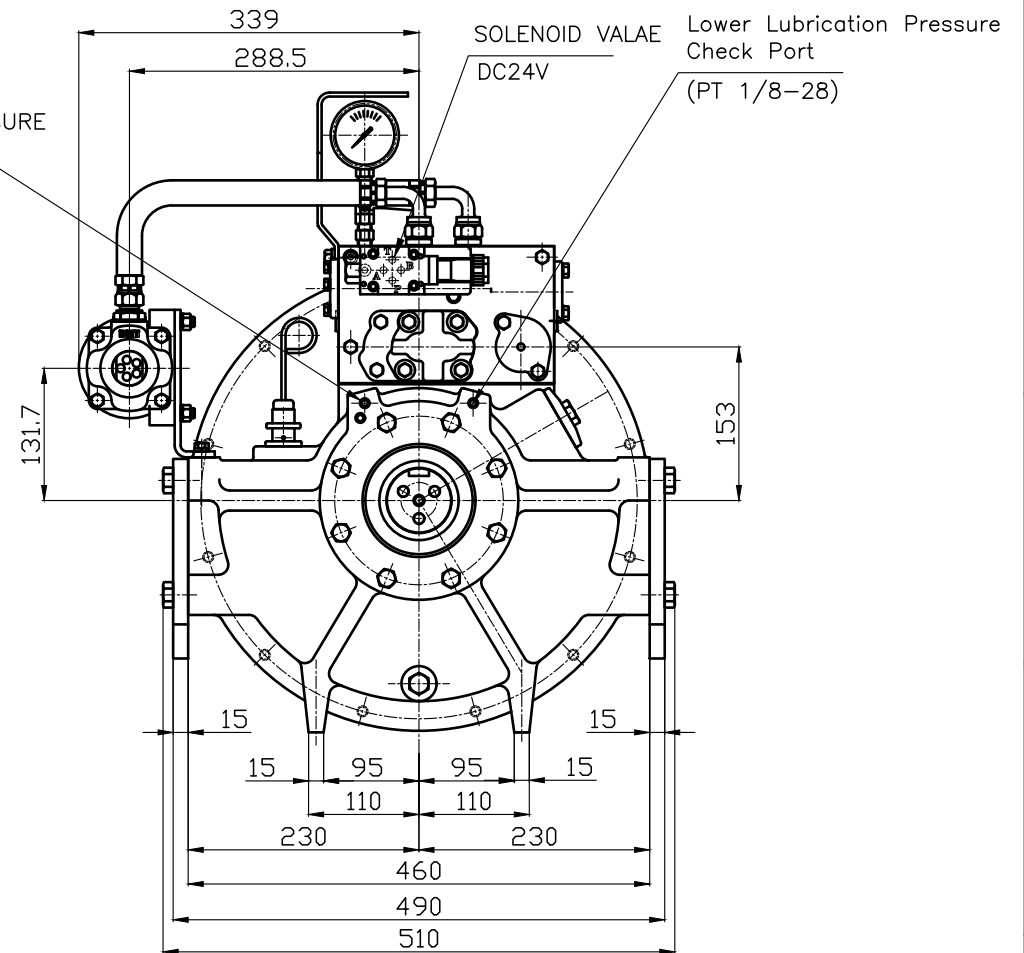
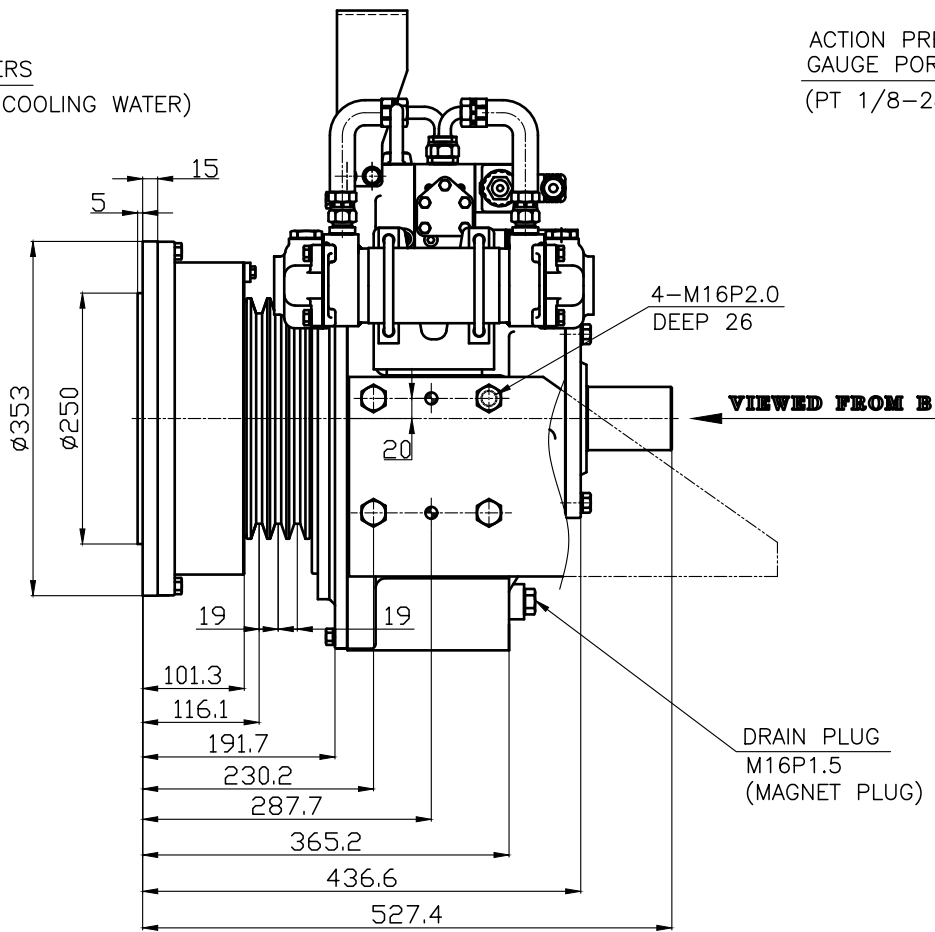


DPO 160 HYDRAULIC POWER TAKE OFF SPECIFICATION

GEAR RATIO	ONLY 1 : 1		
TOTAL WEIGHT	APPROX. 125 kg(DRY)		
OIL CAPACITY	APPROX. 4 L		
OIL VISCOSITY	SAE # 30		
OIL PRESSURE	1.56 ~ 2.35 MPa	CLUTCH OIL	
DIRECTION OF ROTATION	INPUT	THE SAME DIRECTION AS ENGINE ROTATION	
	OUTPUT	THE SAME DIRECTION AS ENGINE ROTATION	
OIL CHANGE INTERVAL	THE FIRST 100HOURS OF INITIAL OPERATION AND EVERY 1000HOURS THEREAFTER		
SHIFTING LIMIT	UNDER 50% OF THE RATED ENGINE SPEED		
OIL COOLER	WATER FLOW 40 ~ 60L/min		TEMPERATURE OF COOLING WATER
			MAX 32°C

ROTATION DIRECTION BY MODEL (VIEWED FROM B)

MODEL	INPUT (ENGINE)	OUTPUT (PTO)
DPO-F160S	(RIGHT)	(RIGHT)
DPO-R160S	(LEFT)	(LEFT)



REMARK

- STANDARD SPECIFICATION
- DRIVING RING: DUMMY PLATE INCLUDING SAE 11.5"
- OUTPUT SHAFT SPEC: SHAFT Ø63\_ KEY 20mm\*80mm

公差	公差	公差	公差	公差	公差	公差	公差	公差	公差	公差	公差	公差	公差
FRACTIONS	DECIMALS	ANGLES	DECIMALS	ANGLES	DECIMALS	ANGLES	DECIMALS	ANGLES	DECIMALS	ANGLES	DECIMALS	ANGLES	DECIMALS
±	±	±	±	±	±	±	±	±	±	±	±	±	±
±0.3	±0.1	±0.05	±0.1	±0.05	±0.2	±0.07	±0.3	±0.1	±0.5	±0.2	±0.8	±0.2	±0.2
±0.7	±0.3	±0.1	±1.2	±0.5	±0.2	±2.0	±0.8	±0.2	±2.0	±0.8	±0.2	±0.2	±0.2

公差表 TOLERANCE ON

번호 160 F11 PART NO. 160 F11 PART NAME 160 F11 QTY 1 MATERIAL 160 F11 SCALE 1/1

DATE 2013.02.05

APPROVED BY [Signature] CHECKED BY [Signature] DESIGNED BY [Signature]

TYPE DPO-F(R)160S ORIGINAL DWG. NO. [Blank]

NAME PTO INSTALLATION DRAWING

DWG. NO. T 1 6 0 F(R)SSG

SIZE A0 CODE ID. NO. [Blank]

D-I INDUSTRIAL