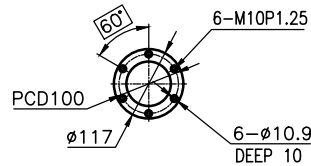
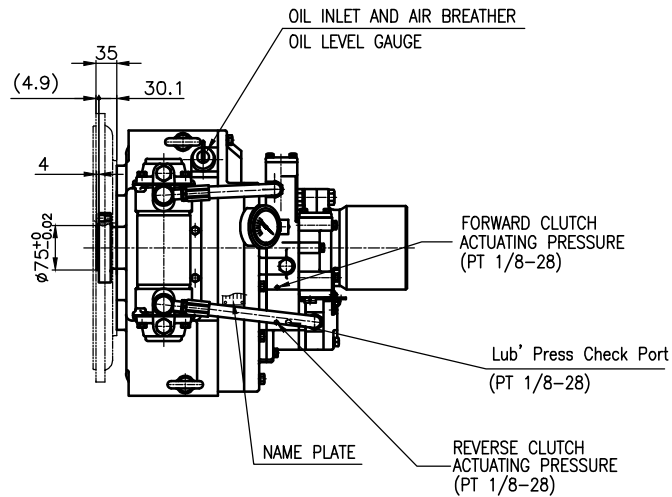


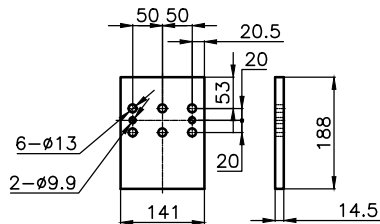
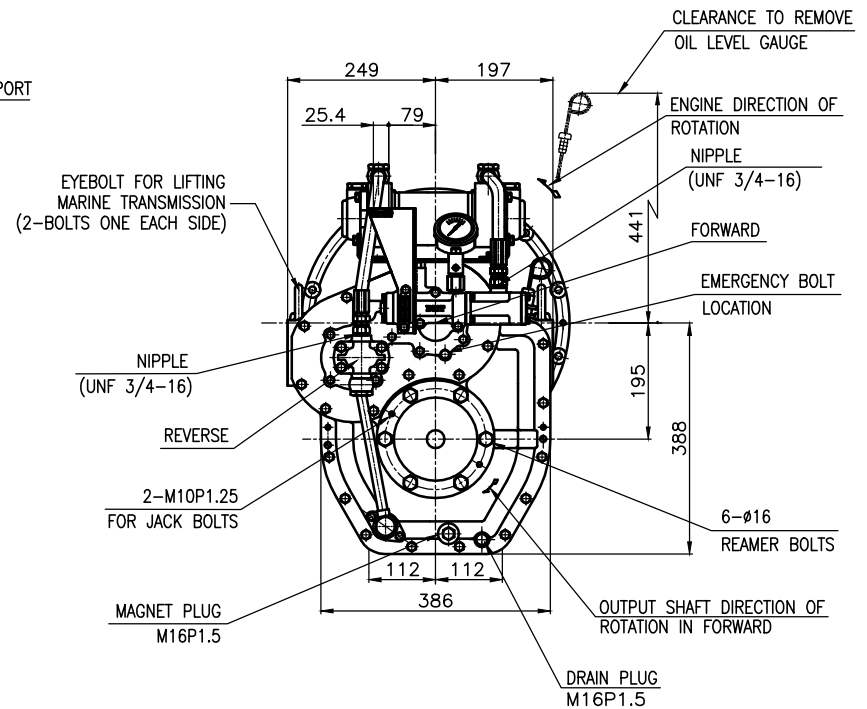
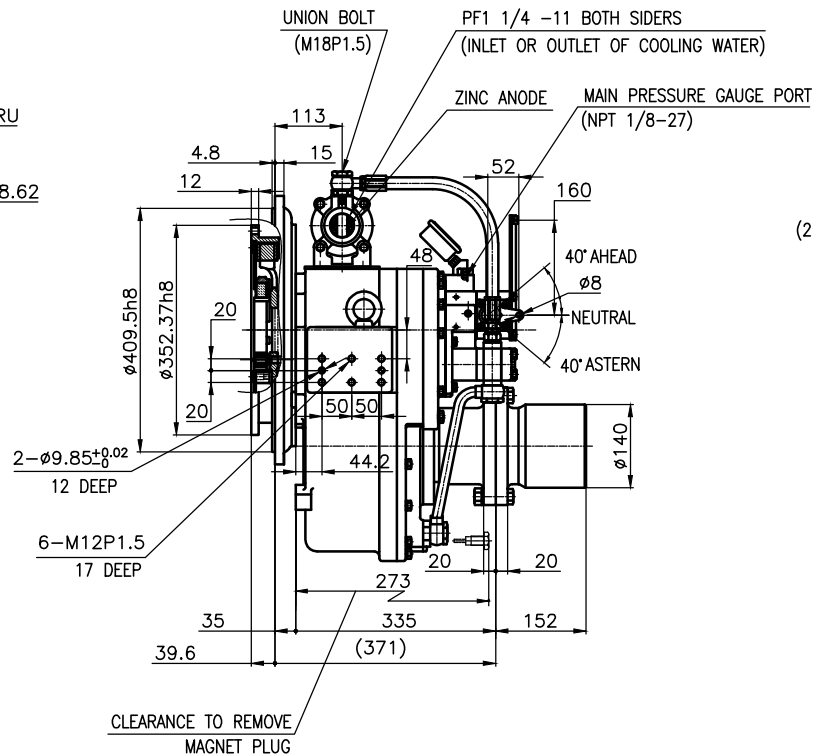
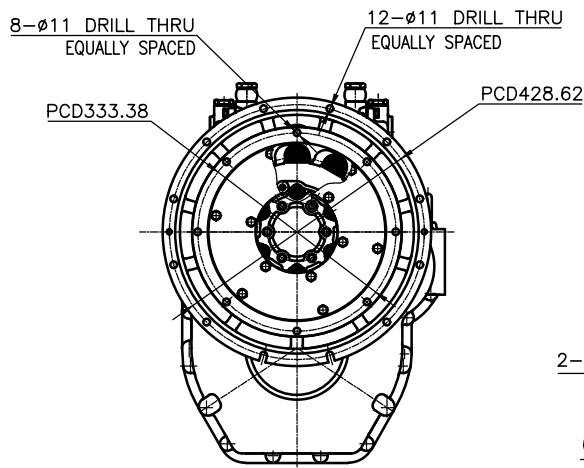
OUTPUT SHAFT COUPLING & PROPELLER COUPLING DIMENSION



INPUT COUPLING DIMENSION



DMT 110A MARINE TRANSMISSION SPECIFICATION			
GEAR RATIO	1.77	2.09	2.42 2.82 3.19 3.81
TOTAL WEIGHT	APPROX. 212 kg(DRY)		
OIL CAPACITY	APPROX. 4 L		
OIL VISCOSITY	SAE # 30		
OIL PRESSURE	1.96 ~ 2.54 MPa	CLUTCH OIL	
DIRECTION OF ROTATION IN FORWARD	INPUT	C.C.W VIEWED FROM THE STERN	
	OUTPUT	C.W VIEWED FROM THE STERN	
OIL CHANGE INTERVAL	THE FIRST 100HOURS OF INITIAL OPERATION AND EVERY 1000HOURS THEREAFTER		
SHIFTING LIMIT	UNDER 50% OF THE RATED ENGINE SPEED		
OIL COOLER	WATER FLOW 40 ~ 60L/min		MAX 32°C
	TEMPERATURE OF COOLING WATER		
OPERATING TORQUE OF SHIFTING LEVER	UNDER 2.94Nm		



BRACKET DIMENSION

REMARK (HOT)

- HOUSING: SAE#3
- DRIVING RING: SAE 11.5"
- COUPLING TYPE : DUAL STAGE
- APPLICATION ENGINE : STANDARD

공용공차 TOLERANCE ON				번호 NO.		품 PART NO.		명 PART NAME		개수 Q'TY	재질 MATERIAL	규격 SIZE	비고 REMARKS
분수 FRACTIONS	소수 DECIMALS	각도 ANGLES	공차 TOL.	입도 FINISH	DATE	SCALE	TYPE	DMT110A		ORIGINAL DWG. NO.			
±	±	±	±	±	2018.09.12 <td>N/S <td>TYPE <td colspan="2">MARINE TRANSMISSION <td colspan="4">000</td> </td></td></td>	N/S <td>TYPE <td colspan="2">MARINE TRANSMISSION <td colspan="4">000</td> </td></td>	TYPE <td colspan="2">MARINE TRANSMISSION <td colspan="4">000</td> </td>	MARINE TRANSMISSION <td colspan="4">000</td>		000			
±	±	±	±	±	APPROVED BY	CHECKED BY	DESIGNED	NAME		11000GA~E-3115DCH			
±	±	±	±	±	JK.Kim	TH.Cha	GH.Park	DWG. NO.		000			
±	±	±	±	±	D-I INDUSTRIAL		SIZE	A 8	CODE ID. NO.				