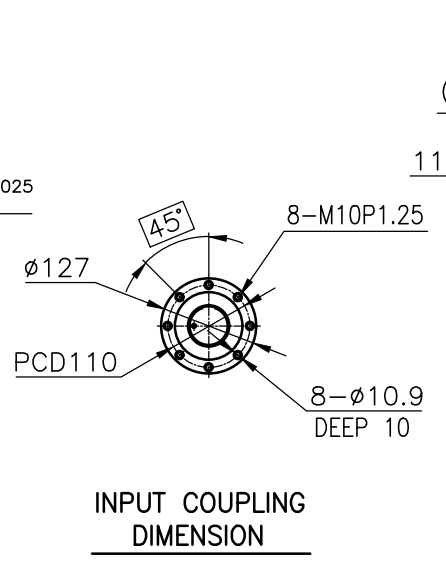
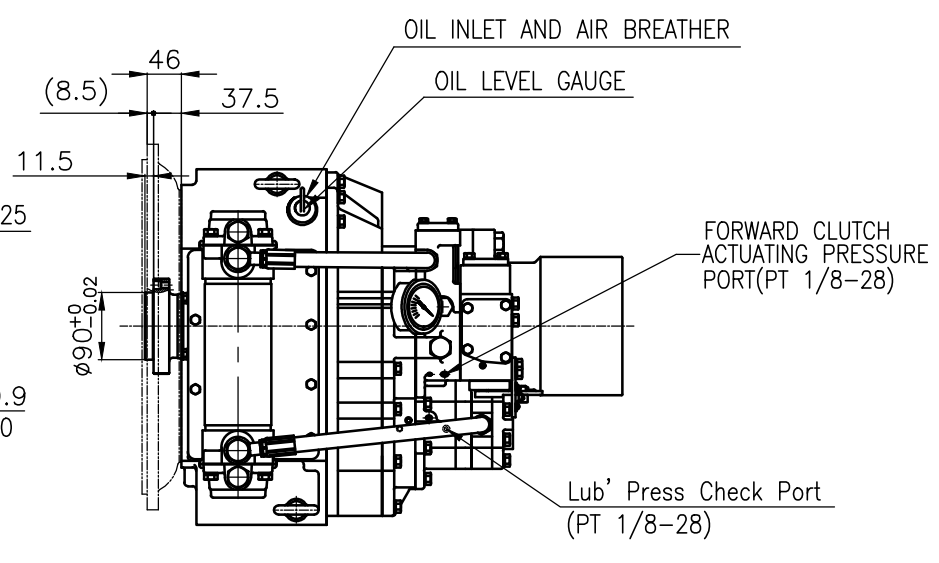


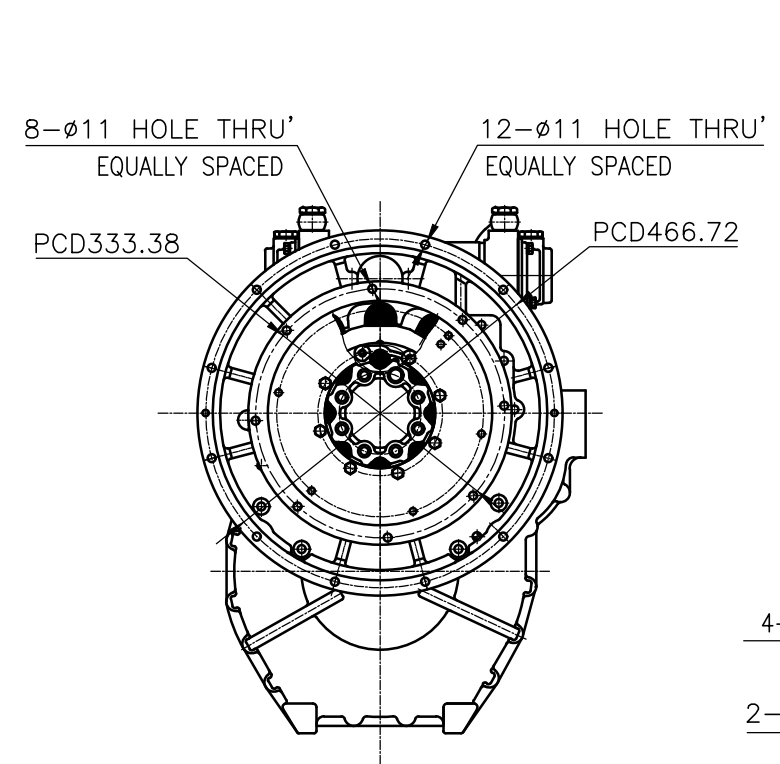
OUTPUT SHAFT COUPLING & PROPELLER COUPLING DIMENSION



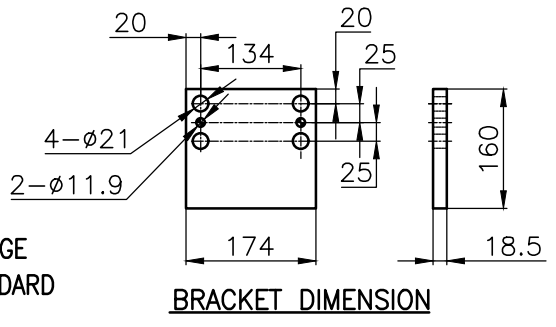
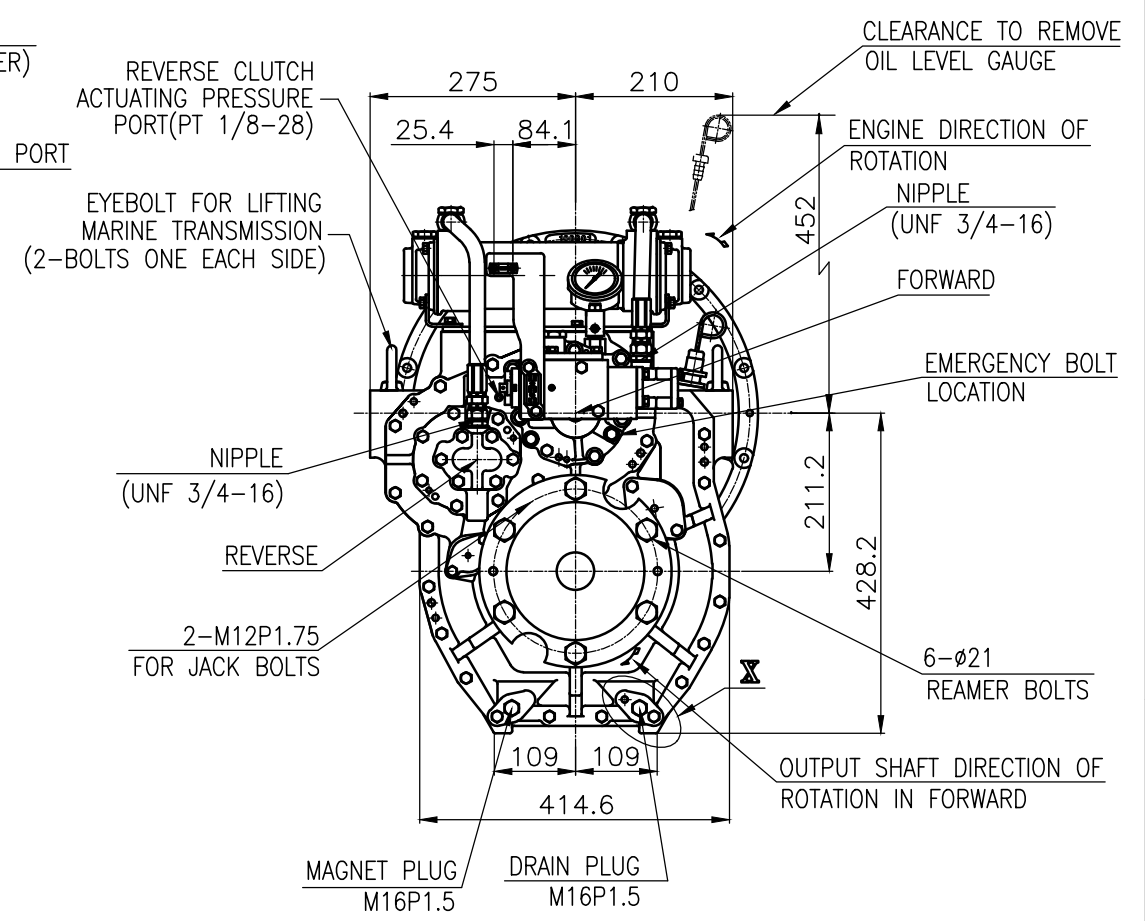
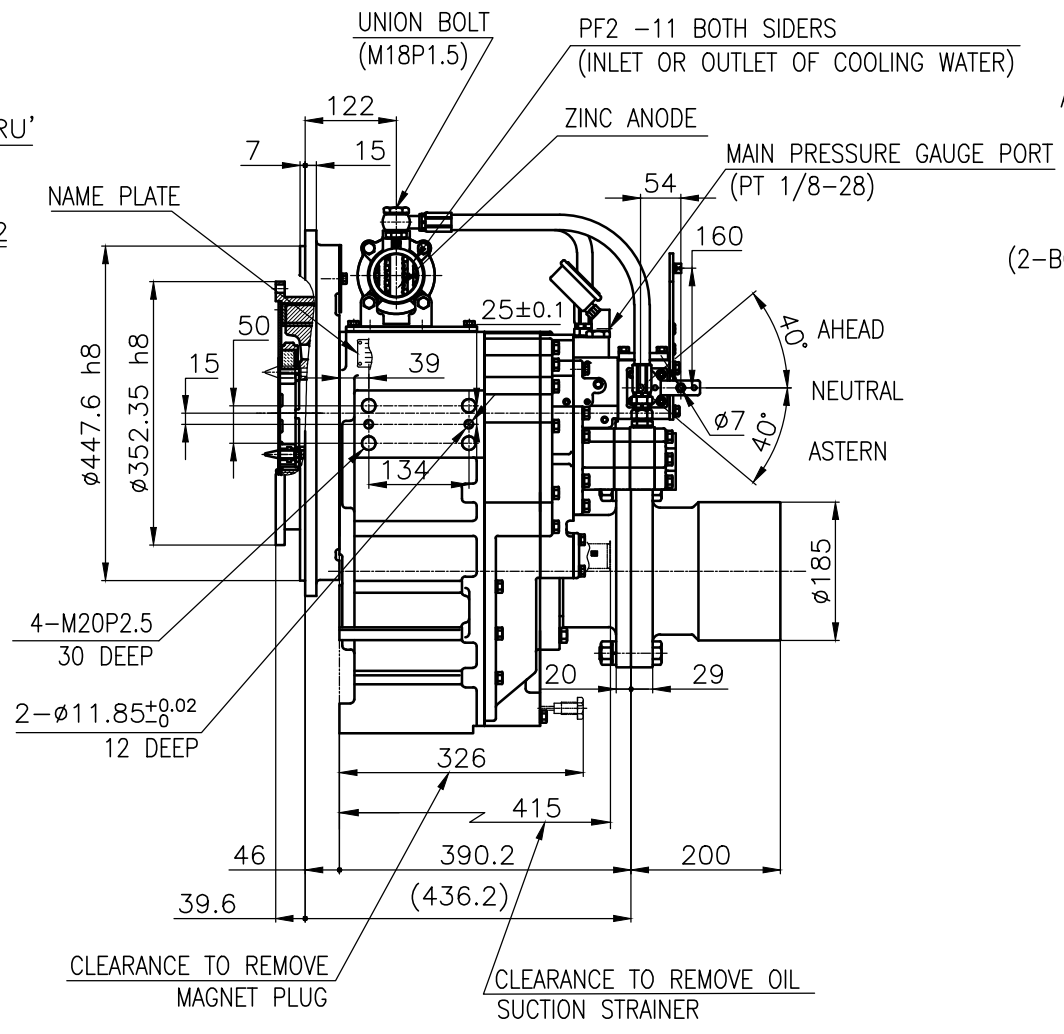
INPUT COUPLING DIMENSION



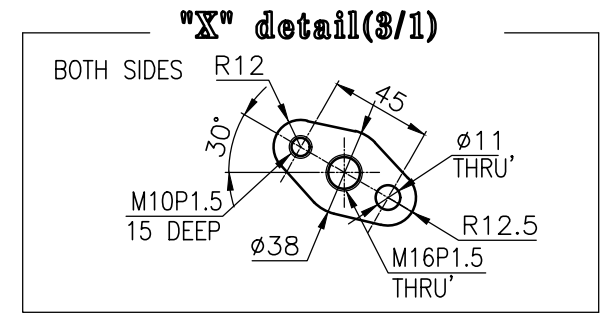
DMT 190H MARINE TRANSMISSION SPECIFICATION			
GEAR RATIO	1.83, 2.09, 2.52, 3.08, 3.43		
TOTAL WEIGHT	APPROX. 300 kg(DRY)		
OIL CAPACITY	APPROX. 5.5 L		
OIL VISCOSITY	SAE # 30		
OIL PRESSURE	1.96 ~ 2.35 MPa	CLUTCH OIL	
DIRECTION OF ROTATION	INPUT	C.C.W VIEWED FROM THE STERN	
	OUTPUT	C.W VIEWED FROM THE STERN	
OIL CHANGE INTERVAL	THE FIRST 100HOURS OF INITIAL OPERATION AND EVERY 1000HOURS THEREAFTER		
SHIFTING LIMIT	UNDER 50% OF THE RATED ENGINE SPEED		
OIL COOLER	WATER FLOW 40 ~ 60L/min		
	TEMPERATURE OF COOLING WATER		MAX 32°C
OPERATING TORQUE OF SHIFTING LEVER		UNDER 2.94Nm	



REMARK
 1.HOUSING: SAE#2
 2.DRIVING RING: SAE 11.5"
 3.COUPLING TYPE : DUAL STAGE
 4.APPLICATION ENGINE : STANDARD



BRACKET DIMENSION



"X" detail(3/1)

公差表 TOLERANCE ON				PART NO.		PART NAME		QTY		MATERIAL		SIZE		REMARKS	
分數	小數	角度		NO.	變	名	數	材	規	備	備	備	備	備	備
±	±	±	±												
1 초과 4 이하	± 0.3	± 0.1	± 0.05	DMT190H		TYPE		DMT190H		ORIGINAL DWG. NO.					
4 16	± 0.5	± 0.2	± 0.07	MARINE TRANSMISSION		NAME		MARINE TRANSMISSION		DWG. NO.		186000GA~E-2115DC		개형(REV.) 000	
16 63	± 0.7	± 0.3	± 0.1	APPROVED BY		CHECKED BY		DRAWN		DESIGNED		GH.Park			
63 250	± 1.2	± 0.5	± 0.2	JK.Kim		TH.Cha		GH.Park							
250 1000	± 2.0	± 0.8	± 0.3	D-I INDUSTRIAL		SCALE		1/1		SIZE		A 3		CODE ID. NO.	