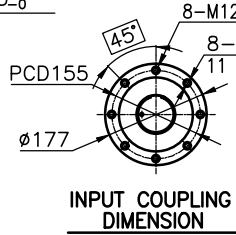
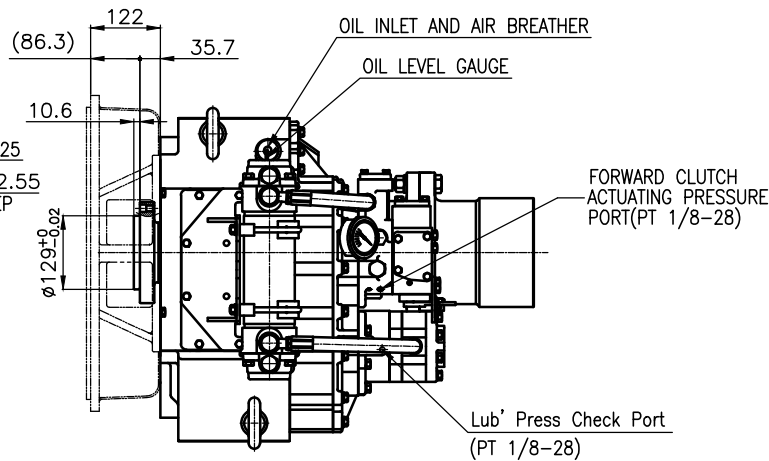


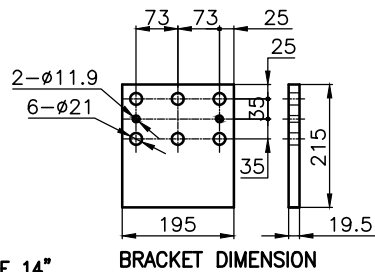
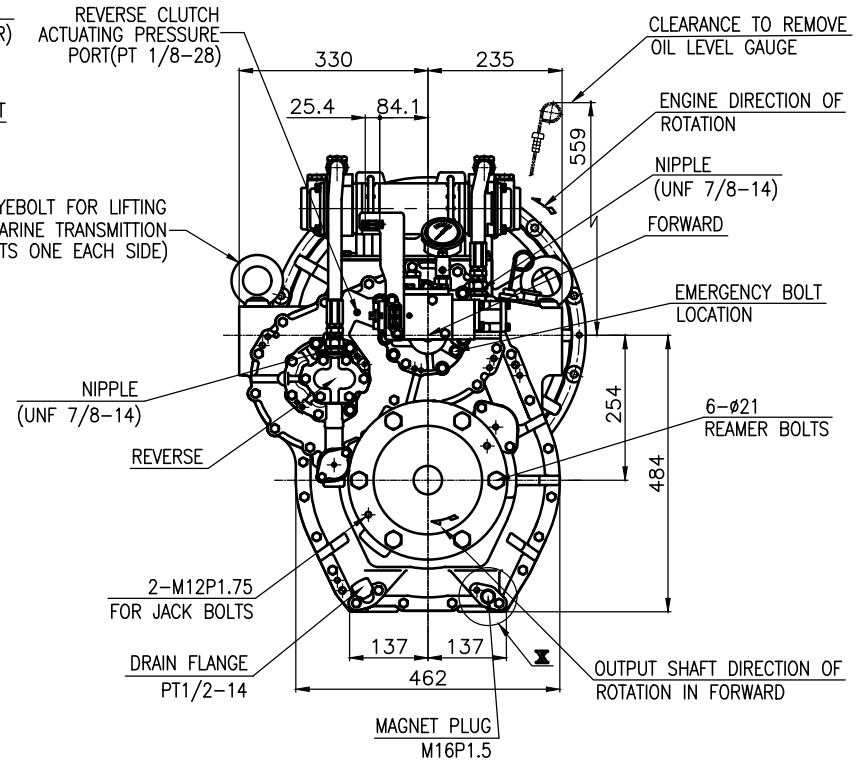
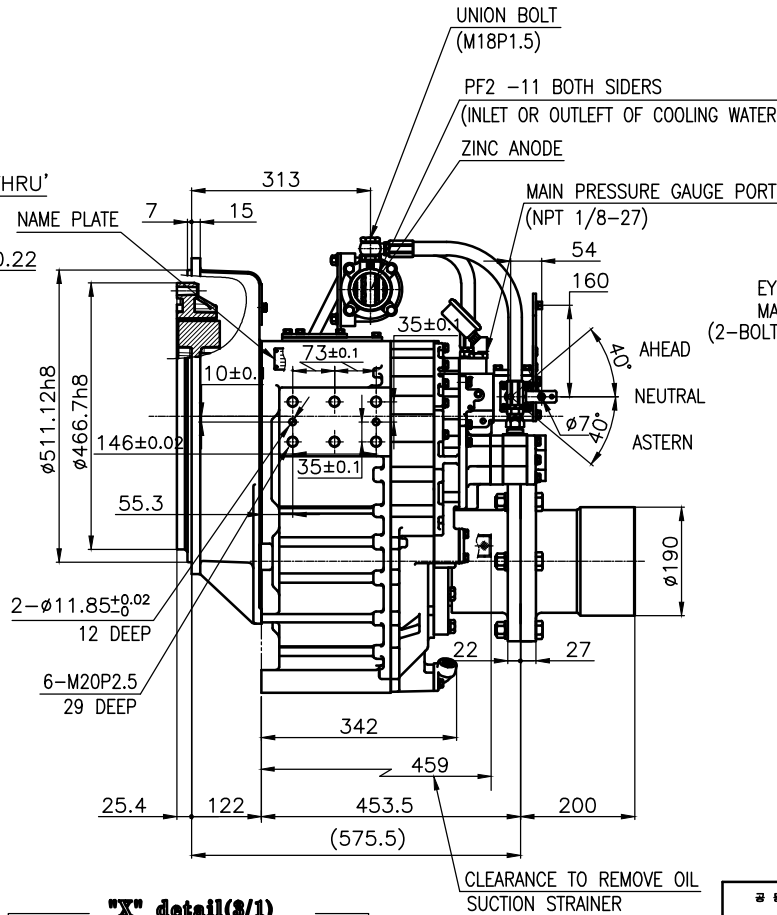
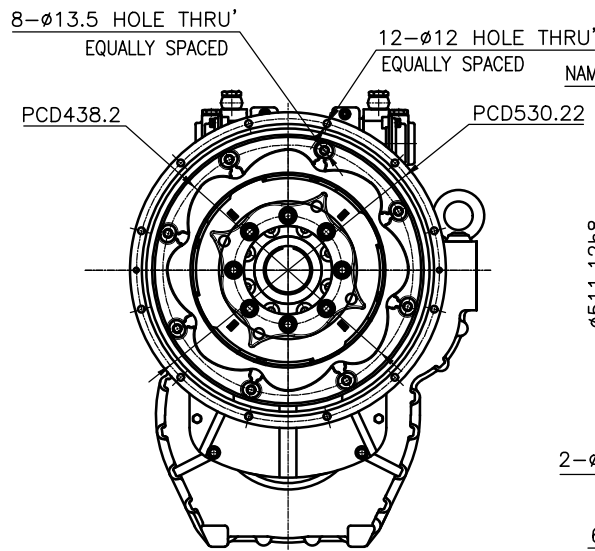
OUTPUT SHAFT COUPLING & PROPELLER COUPLING DIMENSION



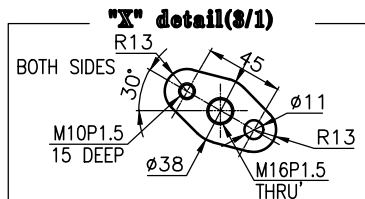
INPUT COUPLING DIMENSION



DMT280H MARINE TRANSMISSION SPECIFICATION		
GEAR RATIO	2.06, 2.50, 2.92, 3.26	
TOTAL WEIGHT	APPROX. 490 Kg(DRY)	
OIL CAPACITY	APPROX. 8 L	
OIL VISCOSITY	SAE # 30	
OIL PRESSURE	1.96 ~ 2.54 MPa	CLUTCH OIL
DIRECTION OF ROTATION	INPUT	C.W VIEWED FROM THE STERN
IN FORWARD	OUTPUT	C.W VIEWED FROM THE STERN
OIL CHANGE INTERVAL	THE FIRST 100HOURS OF INITIAL OPERATION AND EVERY 1000HOURS THEREAFTER	
SHIFTING LIMIT	UNDER 50% OF THE RATED ENGINE SPEED	
OIL COOLER	WATER FLOW 60 ~ 80 L/min	
	TEMPERATURE OF COOLING WATER	MAX 32°C
OPERATING TORQUE OF SHIFTING LEVER	UNDER 2.94Nm	



BRACKET DIMENSION



- REMARK  
 1.HOUSING: SAE#1  
 2.DRIVING RING: SAE 14"  
 3.COUPLING TYPE  
 CENTA Flex Coupling (77268801)  
 4.APPLICATION ENGINE : STANDARD

TOLERANCE ON				PART NO.		PART NAME		Q'TY		MATERIAL		SIZE		REMARKS	
FRACTIONS	DECIMALS	ANGLES	각도	분수	소수	각도	각도	수량	재료	구경	비고	원도	비고	비고	비고
±	±	±	±	±	±	±	±	±	±	±	±	±	±	±	±
MATERIAL				DATE		SCALE		TYPE		TYPE		TYPE		TYPE	
APPROVED BY				CHECKED BY		DRAWN		DESIGNED		NAME		NAME		NAME	
JK.Kim				TH.Cha		GH.Park				DMT280H		MARINE TRANSMISSION		ORIGINAL DWG. NO.	
DWG. NO.				REV.		REV.		REV.		REV.		REV.		REV.	
27100GA~D-114CFR				000						27100GA~D-114CFR		000		000	
D-I INDUSTRIAL				A 3		CODE ID. NO.									