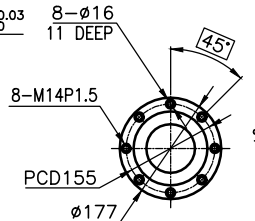
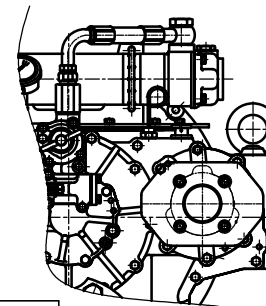
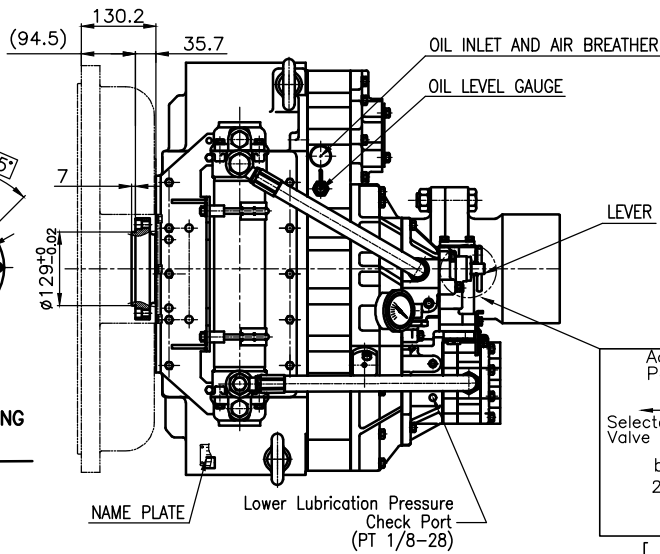


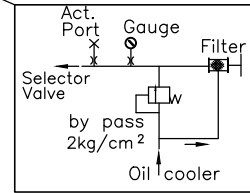
OUTPUT SHAFT COUPLING & PROPELLER COUPLING DIMENSION



INPUT COUPLING DIMENSION

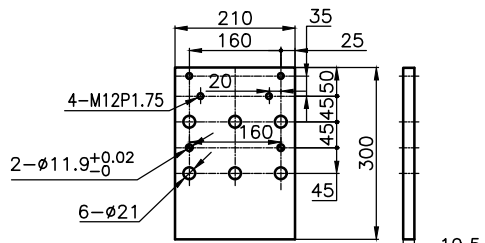
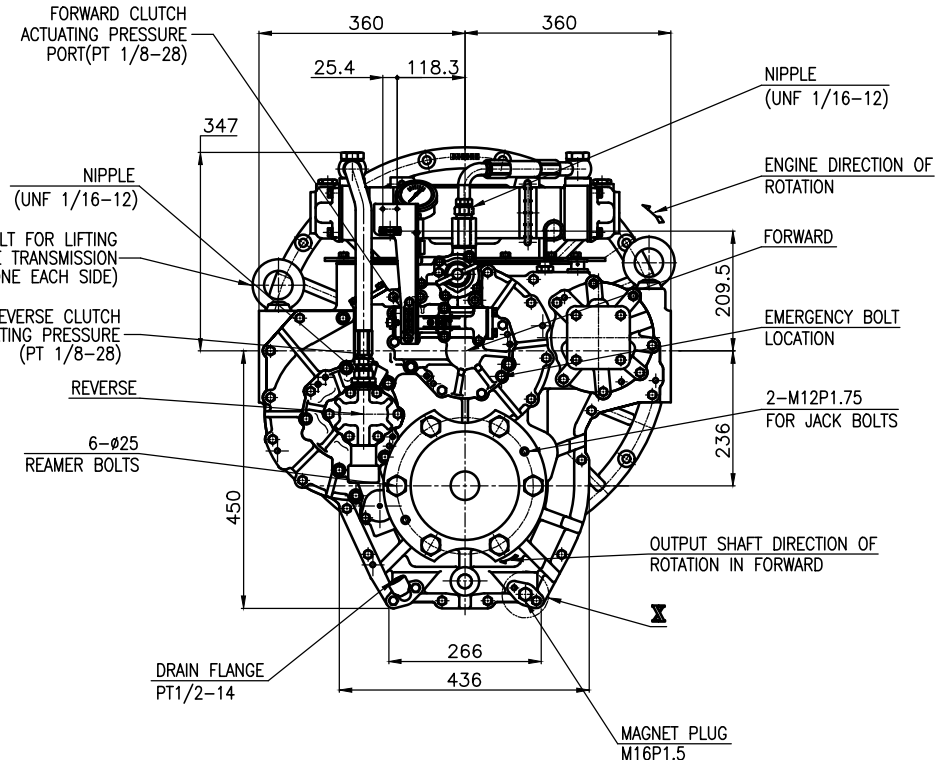
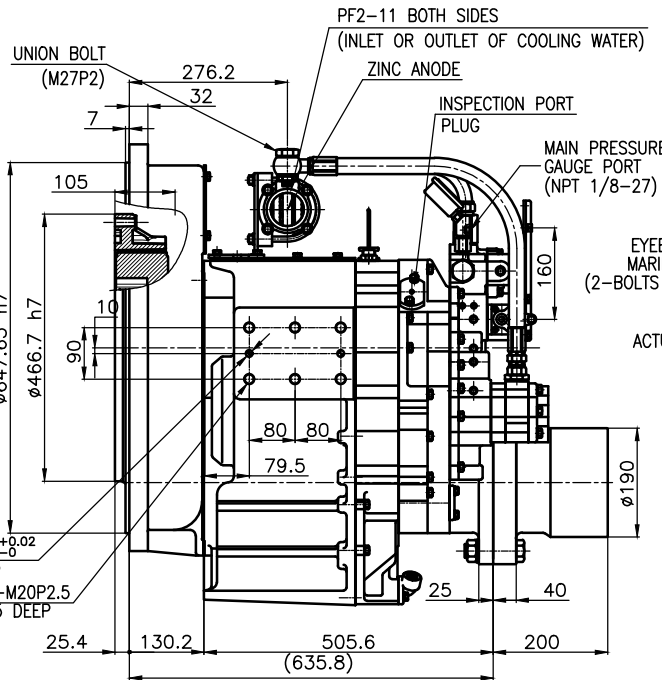
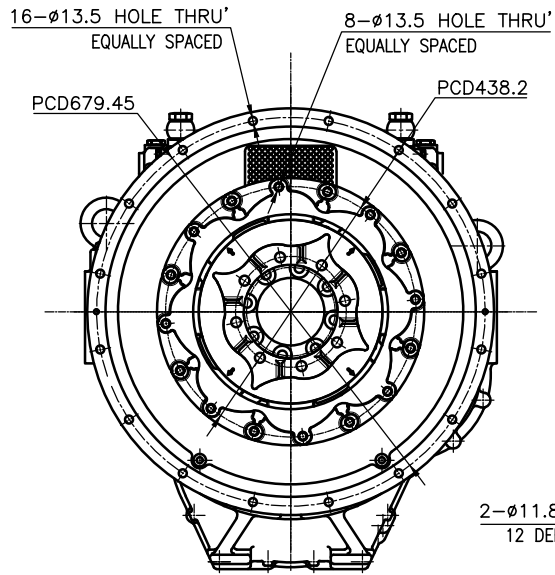


P.T.O ATTACHED

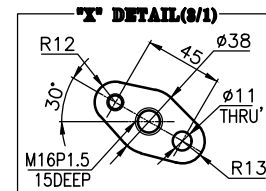


[ BY PASS SYSTEM ]

DMT400H MARINE TRANSMISSION SPECIFICATION		
GEAR RATIO	1.43, 1.72, 2.03, 2.46, 2.75	
TOTAL WEIGHT	APPROX. 660 Kg(DRY)	
OIL CAPACITY	APPROX. 9 L	
OIL VISCOSITY	SAE # 30	
OIL PRESSURE	1.96 ~ 2.54 MPa	CLUTCH OIL
DIRECTION OF ROTATION IN FORWARD	INPUT C.C.W VIEWED FROM THE STERN	OUTPUT C.W VIEWED FROM THE STERN
OIL CHANGE INTERVAL	THE FIRST 100HOURS OF INITIAL OPERATION AND EVERY 1000HOURS THEREAFTER	
SHIFTING LIMIT	UNDER 50% OF THE RATED ENGINE SPEED	
OIL COOLER	WATER FLOW 40 ~ 60 L/m	TEMPERATURE OF COOLING WATER MAX 32°C
OPERATING TORQUE OF SHIFTING LEVER	UNDER 2.94Nm	



BRACKET DIMENSION



- REMARK
- 1.HOUSING : SAE# 0
  - 2.DRIVING RING : SAE 14"
  - 3.COUPLING TYPE  
CENTA Flex Coupling (77318804)

공용공차	TOLERANCE ON	번호	PART NO.	명	PART NAME	개수	재질	규격	비고	
분수	소수	각도	DATE		SCALE	TYPE	REMARKS			
±	±	°	2018.09.12		N/S	DMT400H	ORIGINAL DWG. NO.			
1	호과 4 이하	± 0.3	± 0.1	± 0.05	APPROVED BY	CHECKED BY	DESIGNED	MARINE TRANSMISSION		
4	16	± 0.5	± 0.2	± 0.07	JK.Kim	TH.Cha	GH.Park	DWG. NO. 4000GA~E-014CFR		
16	63	± 0.7	± 0.3	± 0.1	D-I INDUSTRIAL					
63	250	± 1.2	± 0.5	± 0.2						
250	1000	± 2.0	± 0.8	± 0.3						