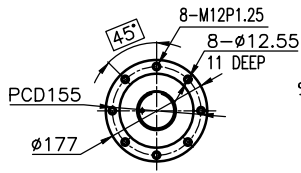
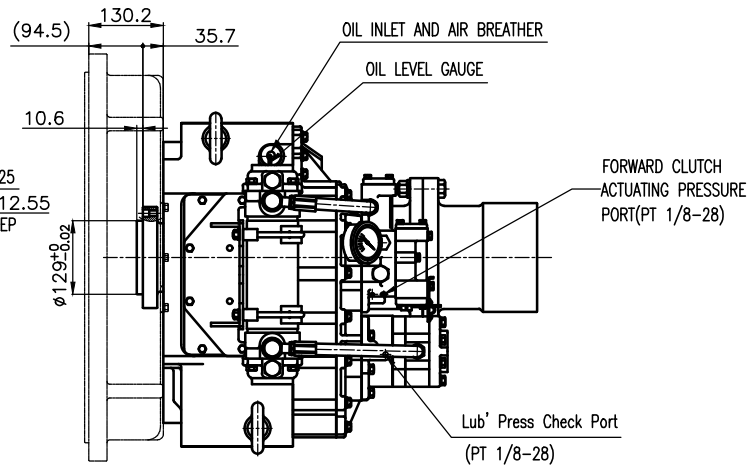


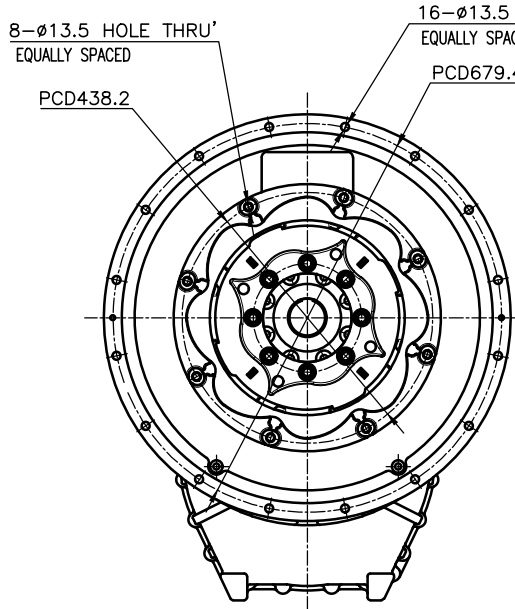
OUTPUT SHAFT COUPLING & PROPELLER COUPLING DIMENSION



INPUT COUPLING DIMENSION

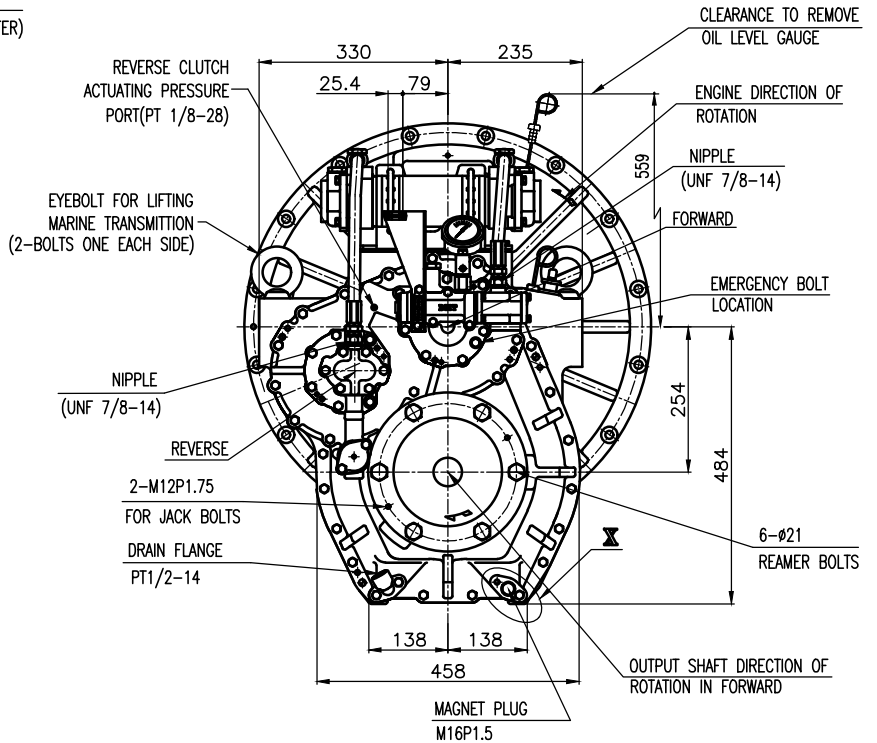
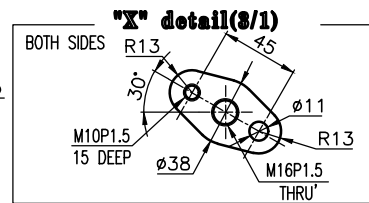
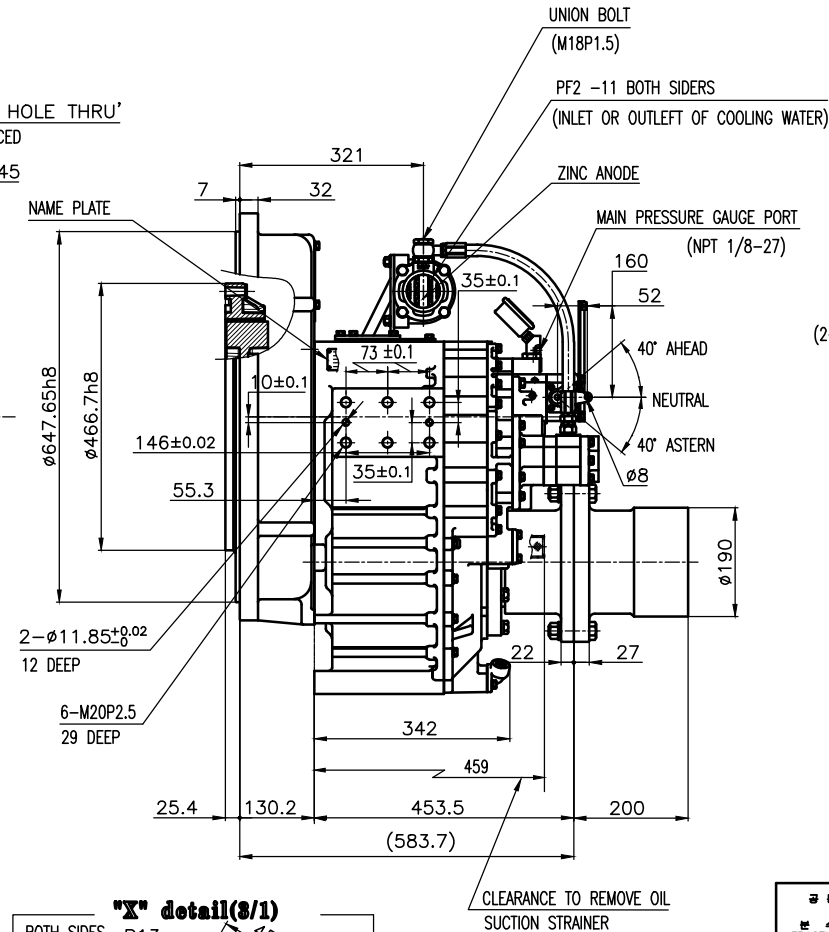


DMT260H MARINE TRANSMISSION SPECIFICATION	
GEAR RATIO	2.06, 2.50, 2.92, 3.26
TOTAL WEIGHT	APPROX. 490 Kg(DRY)
OIL CAPACITY	APPROX. 8 L
OIL VISCOSITY	SAE # 30
OIL PRESSURE	1.96 ~ 2.54 MPa CLUTCH OIL
DIRECTION OF ROTATION IN FORWARD	INPUT C.C.W VIEWED FROM THE STERN OUTPUT C.W VIEWED FROM THE STERN
OIL CHANGE INTERVAL	THE FIRST 100HOURS OF INITIAL OPERATION AND EVERY 1000HOURS THEREAFTER
SHIFTING LIMIT	UNDER 50% OF THE RATED ENGINE SPEED
OIL COOLER	WATER FLOW 60 ~ 80 L/min TEMPERATURE OF COOLING WATER MAX 32°C
OPERATING TORQUE OF SHIFTING LEVER	UNDER 2.94Nm



BRACKET DIMENSION

- REMARK
- HOUSING: SAE#0
 - DRIVING RING: SAE 14"
 - COUPLING TYPE : -CENTA Flex Coupling : 77268803



공통규격 TOLERANCE ON		번호 PART NO.		PART NAME		수량 QTY	재질 MATERIAL	구경 SIZE	비고 REMARKS
분수 FRACTIONS	소수 DECIMALS	각도 ANGLES	MATERIAL		작성 DATE	척도 SCALE	TYPE	DMT260H	
±	±	±			2018.09.12	1/1		ORIGINAL DWG. NO.	
1	0.05	0.1	JK.Kim		TH.Cha	GH.Park	MARINE TRANSMISSION		개방(REV)
4	0.07	0.1	APPROVED BY		CHECKED BY	DESIGNED	NAME		000
16	0.1	0.1	JK.Kim		TH.Cha	GH.Park	DWG. NO.		
63	0.2	0.2	25000GA~D-014CFR				SIZE		
250	0.3	0.3	D-I INDUSTRIAL				CODE ID. NO.		