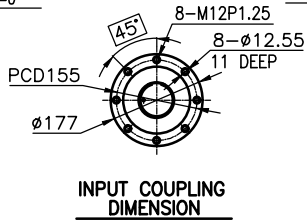
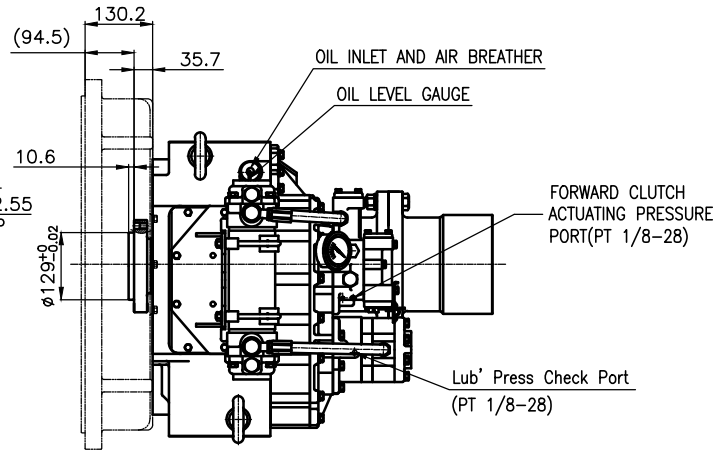


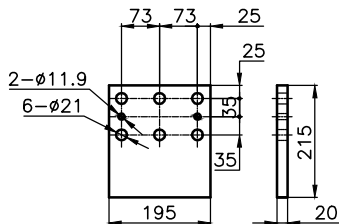
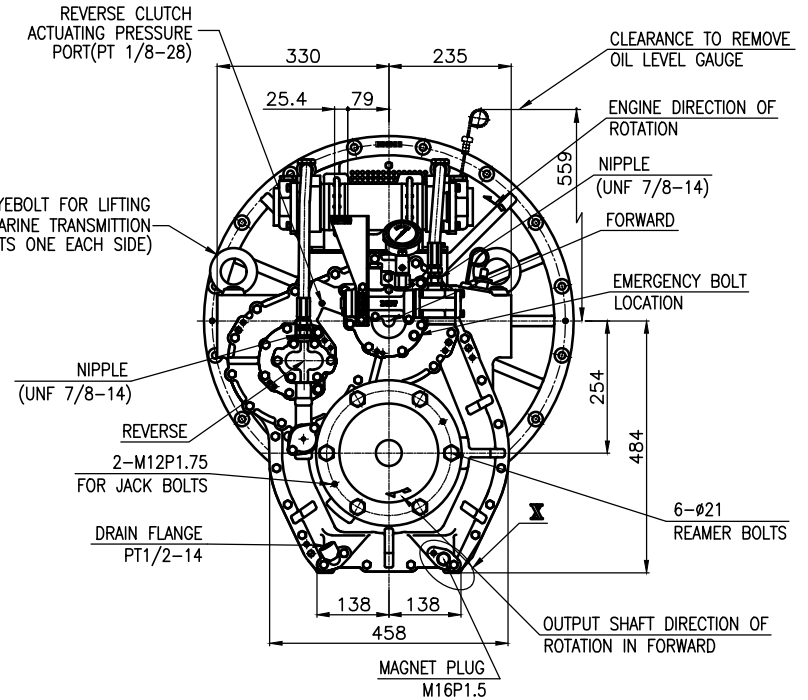
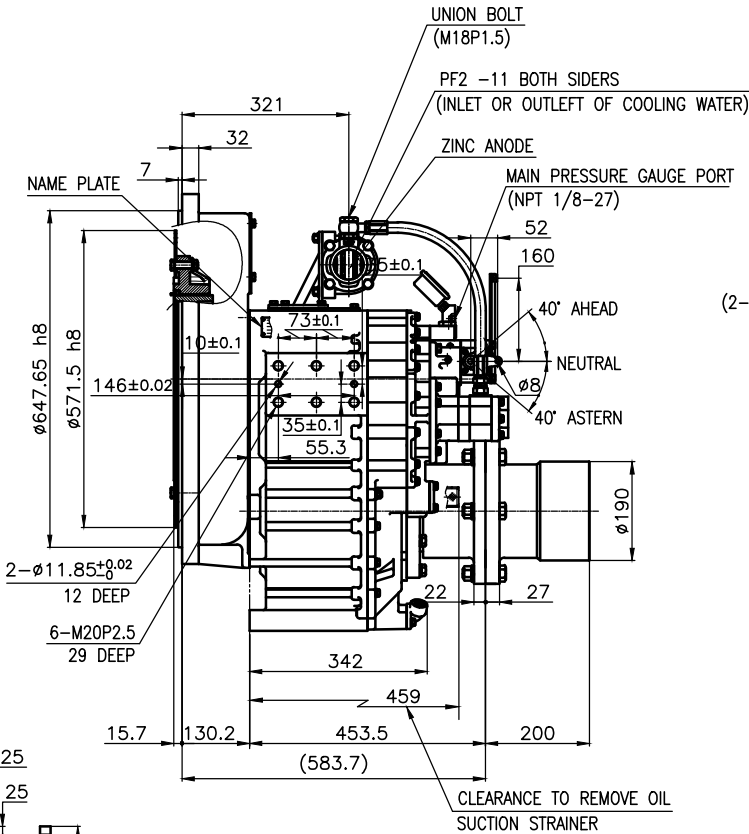
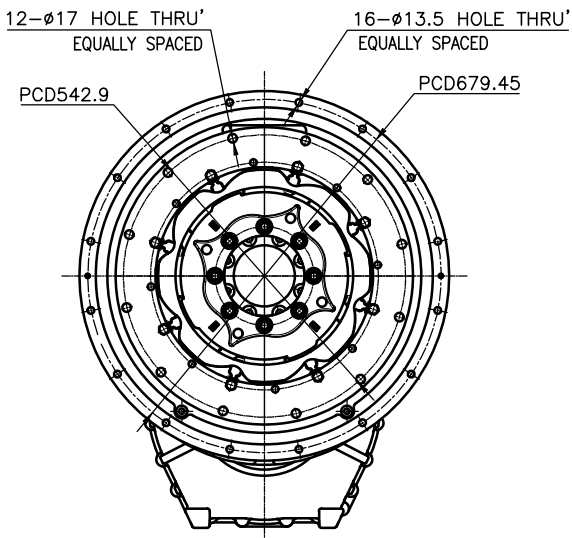
OUTPUT SHAFT COUPLING & PROPELLER COUPLING DIMENSION



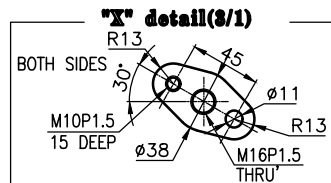
INPUT COUPLING DIMENSION



DMT260H MARINE TRANSMISSION SPECIFICATION			
GEAR RATIO	2.06, 2.50, 2.92, 3.26		
TOTAL WEIGHT	APPROX. 490 Kg(DRY)		
OIL CAPACITY	APPROX. 8 L		
OIL VISCOSITY	SAE # 30		
OIL PRESSURE	1.96 ~ 2.54 MPa	CLUTCH OIL	
DIRECTION OF ROTATION IN FORWARD	INPUT	C.C.W VIEWED FROM THE STERN	
	OUTPUT	C.W VIEWED FROM THE STERN	
OIL CHANGE INTERVAL	THE FIRST 100HOURS OF INITIAL OPERATION AND EVERY 1000HOURS THEREAFTER		
SHIFTING LIMIT	UNDER 50% OF THE RATED ENGINE SPEED		
OIL COOLER	WATER FLOW 60 ~ 80 L/min		
	TEMPERATURE OF COOLING WATER MAX 32°C		
OPERATING TORQUE OF SHIFTING LEVER	UNDER 2.94Nm		



BRACKET DIMENSION



- REMARK
- HOUSING: SAE#0
  - DRIVING RING: SAE 18"
  - COUPLING TYPE  
CENTA Flex Coupling (77268802)

TOLERANCE ON				PART NO.		PART NAME		QTY		MATERIAL		SIZE		REMARKS	
FRACTIONS	DECIMALS	ANGLES		NO.	REV.										
±	±	±	±												
MATERIAL				DATE		SCALE		TYPE		TYPE		TYPE		REMARKS	
APPROVED BY				CHECKED BY		DRAWN		DESIGNED		NAME		NAME		REMARKS	
JK.Kim				TH.Cha		GH.Park				DMT260H		MARINE TRANSMISSION		ORIGINAL DWG. NO.	
DWG. NO.				DWG. NO.		DWG. NO.		DWG. NO.		DWG. NO.		DWG. NO.		REVISION	
25000GA~D-018CFR				25000GA~D-018CFR		25000GA~D-018CFR		25000GA~D-018CFR		25000GA~D-018CFR		25000GA~D-018CFR		000	
D-I INDUSTRIAL				D-I INDUSTRIAL		D-I INDUSTRIAL		D-I INDUSTRIAL		D-I INDUSTRIAL		D-I INDUSTRIAL		D-I INDUSTRIAL	
SIZE				SIZE		SIZE		SIZE		SIZE		SIZE		SIZE	
A 8				A 8		A 8		A 8		A 8		A 8		A 8	
CODE ID. NO.				CODE ID. NO.		CODE ID. NO.		CODE ID. NO.		CODE ID. NO.		CODE ID. NO.		CODE ID. NO.	