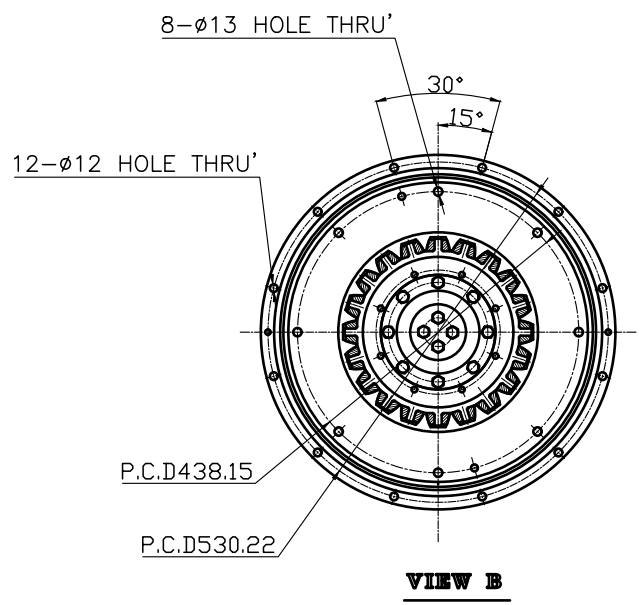
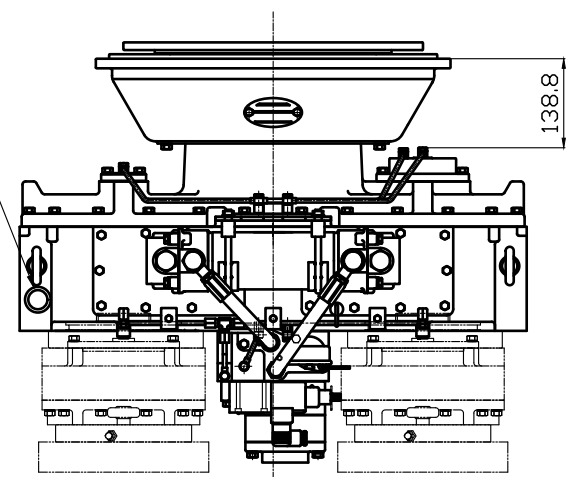


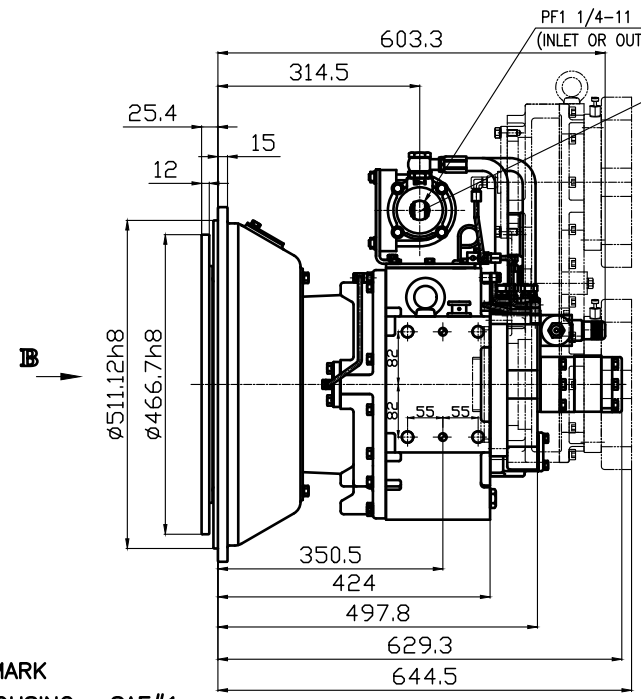
REV. NO.	DESCRIPTION	REV. POSITION	REVISION NO.	DATE	REV'D	APP'D



OIL INLET AND AIR BREATHER



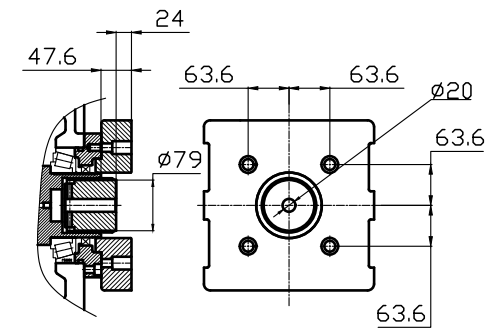
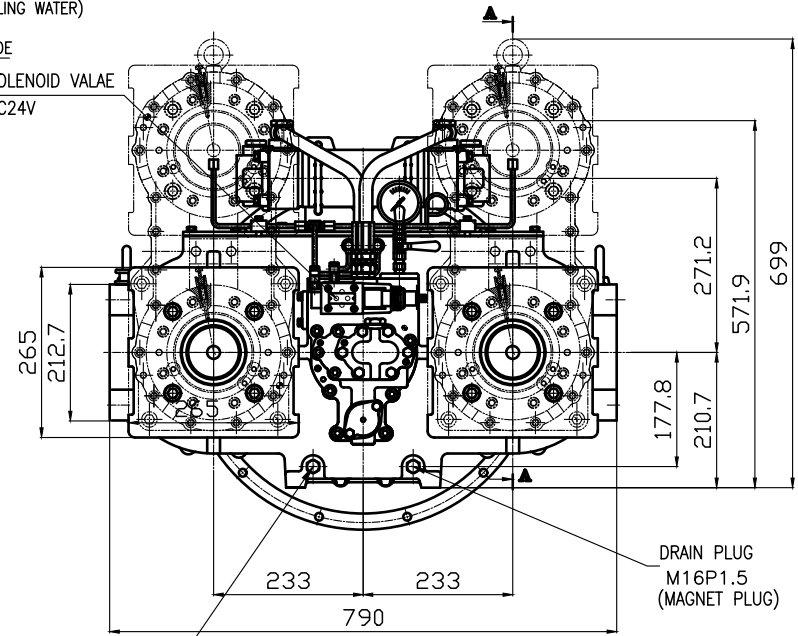
DPO 410 HYDRAULIC POWER TAKE OFF SPECIFICATION			
GEAR RATIO	0.6607:1, 0.9787:1, 0.7692:1(동속)		
TOTAL WEIGHT	APPROX. 420 kg(DRY)		
OIL CAPACITY	APPROX. 7 L		
OIL VISCOSITY	SAE # 30		
OIL PRESSURE	16 ~ 25 kg/cm <sup>2</sup>	CLUTCH OIL	
DIRECTION OF ROTATION	INPUT	C.C.W VIEWED FROM THE STERN	
	OUTPUT	C.W VIEWED FROM THE STERN	
OIL CHANGE INTERVAL	THE FIRST 100HOURS OF INITIAL OPERATION AND EVERY 1000HOURS THEREAFTER		
SHIFTING LIMIT	UNDER 50% OF THE RATED ENGINE SPEED		
OIL COOLER	WATER FLOW 40 ~ 60L/min		TEMPERATURE OF COOLING WATER MAX 32°C



PF1 1/4-11 BOTH SIDES (INLET OR OUTLET OF COOLING WATER)

ZINC ANODE

SOLENOID VALVE DC24V



**단면 A-A**

- REMARK
- 1.HOUSING : SAE#1
  - 2.DRIVING RING : SAE 14"
  - 3.COULING TYPE : RUBBER
  - 4.GEAR BOX TYPE (4PUMP)

M16P1.5 DRAIN PLUG

TOLERANCE ON		NO.	PART NO.	PART NAME	QTY	MATERIAL	SIZE	REMARKS
FUNCTIONS	DECIMALS	ANGLES	MATERIAL		주기 1 합조	TYPE	DPO-F(R)410	ORIGINAL DWG. NO.
±0.05	±0.1	±0.05	DATE		2014.01.10	SCALE	N/S	NAME
±0.07	±0.2	±0.07	APPROVED BY			CHECKED BY		DRAWN
±0.1	±0.3	±0.1						DESIGNED
±0.2	±0.5	±0.2						NAME
±0.3	±0.7	±0.3						
±0.5	±1.2	±0.5						
±0.7	±2.0	±0.7						
±1.0	±3.0	±1.0						
±1.5	±4.0	±1.5						
±2.0	±5.0	±2.0						

동 이 공 업(주) 크기 A0 코드 번호 CODE ID. NO.